



March 11-29 2020

AUCKLAND ARTS FESTIVAL

AAF.CO.NZ

ngahau

performance



At Colenso, we're inspired by creativity in all its forms - from incredible events at Auckland Arts Festival to innovative technology. We teamed up with Spark, Google and Te Aka Māori Dictionary to develop Kupu, an app that translates photos into te reo Māori. Giving Kiwis a new language experience is just one of the ways we like to see creativity celebrated. Auckland Arts Festival is another. We hope you enjoy the show.

COLENSO **BEDO** PROUDLY SUPPORTING
AUCKLAND ARTS FESTIVAL

Nau mai ki te Ahurei Toi o Tāmaki Makaurau

I tēnei, i te 12 o ēnei Ahurei, ka rukuhia ngā take pakeke o te wā: Te kainamutanga o te Parekura āhuarangi; Nō wai te mana whakahaere ki ngā kōrero ka rere?; Mā te aha e kīia ai tētahi mahi he kōhakitanga?; E tika ana kia arohaina e tātou a wai?; ā, me ngā tūkinga o te ao tawhito ki te ao o nāiane.

Ko tā ngā ringatoi kua whai wāhi mai ki te Ahurei he ārahi i a tātou kia wherawherahia ai he kare ā-roto matarau, he tō i a tātou ki ao kē, otirā, he whakatakoto i ētahi ui pakeke. Kāore kau he rongoā ngāwari noa. Ka mahue mai tātou ki ō tātou hinengaro huritao, ki ētahi tirohanga hou anō.

Arā hoki ko ngā pito manahau.

Ka whakatairitea e tā tātou Ahurei ngā take pakeke ki ētahi kaupapa e rere ai ngā whakaaro ki ao kē, e rangona ai te hari nui, e kata ai te puku, e hiamō ai te ngākau. Ka hoki ngā mahara ki ngā koanga ngākau o te ao o te tangata nā runga i ngā karawhiunga a ngāi ringatoi pūkenga whānui, tītāritari mai, waiata mai, whakaari mai, puoro mai anō, ki tētahi whakanui e rewa ai te ngākau ki ngā tini pārekarekatanga, ki ngā tini painga o te ao.

Whakapiri mai; whāia he whakaaturanga, tukuna ō whakaaro, tō ngākau, tō wairua anō, kia rere ki taumata kē. Kia whiwhi hua nui koe.

E tukuna nei tēnei Ahurei ki ngā tāngata o Tāmaki Makaurau i runga i te ngākau aroha, me te aha, e pōhiritia nei te katoa kia whai wāhi mai ki ētahi wiki mīharo e toru hei tēnei Raumatī.

Welcome to Auckland Arts Festival

In this, our 12th Festival, we grapple with the tough stuff: impending climate Armageddon, who gets to control the narrative, what constitutes appropriation, who we are allowed to love, and the collision of the traditional and the contemporary.

The artists of the Festival take us on explorations of complex emotions, lead us into other realms and pose tricky questions. They offer us no easy resolutions. We are left with intellectual provocations and new perspectives.

Then there is the joy.

Our Festival contrasts the tough stuff with escapism and elation, laughter and excitement. Reminding us of the joyfulness of human life are acrobats, singers, actors and musicians in gleeful celebration of all that is fun and good in the world.

Join us; see a show, let your mind, your heart and your soul soar to new heights. Be rewarded.

We offer this Festival to the people of Tāmaki Makaurau with aroha and invite everyone to be part of three glorious weeks this Summer.



What's On & When

Our official Festival dates are **11-29 March 2020**, although some events begin as early as 21 February. For an overview of event dates, times and venues, consult the fold-out **festival calendar** on page 77.

Where & How to Book

aaf.co.nz is your destination for everything about the Festival, including box office locations and information on **how to book** tickets online, by phone or in person. Or see page 76 for booking information.

Access & Inclusion

Specially priced **access tickets** are available for selected performances for access patrons and one companion. For a guide to accessible events, see page 68 or visit **aaf.co.nz/access**

CONTENTS

4 PLACE DES ANGES
SPECIAL EVENT

8 LIMBO UNHINGED
CIRCUS CABARET

10 SNOW WHITE
DANCE

12 CIRCOLOMBIA –
ACÉLÉRÉ
CIRCUS

14 BLACK TIES
THEATRE

16 WOLFGANG'S MAGICAL
MUSICAL CIRCUS
FAMILY CIRCUS

18 TOITŪ TE REO
TOITŪ TE REO

20 TIRA
MUSIC TOITŪ TE REO

22 KA PŌ, KA WAIATA
MUSIC TOITŪ TE REO

24 COLD BLOOD
THEATRE

26 DIMANCHE
THEATRE

28 UPU
THEATRE

30 MOUTHPIECE
THEATRE

32 BARRY MCGOVERN IN
WATT
BY SAMUEL BECKETT
THEATRE

34 BLACK LOVER
THEATRE

35 BABBLE
THEATRE

36 LAGRIME DI SAN
PIETRO
MUSIC

38 BEETHOVEN 250
MUSIC

40 AMANDA PALMER –
THERE WILL BE
NO INTERMISSION
MUSIC

41 ESTÈRE –
INTO THE BELLY
OF CAPRICORN
MUSIC

42 EIGHT SONGS
FOR A MAD KING
MUSIC

43 CLARION:
MUSIC BY
EVE DE
CASTRO-ROBINSON
MUSIC

44 ALDOUS HARDING
WEYES BLOOD
PURPLE PILGRIMS
MUSIC

45 @PEACE AND THE
PLUTONIAN
NOISE SYMPHONY
MUSIC

46 SOWETO GOSPEL
CHOIR: FREEDOM
MUSIC

47 AN EVENING WITH
PAT METHENY
MUSIC

48 BILADURANG
DANCE THEATRE

50 VERSES
DANCE

51 NGĀ MANU RŌREKA
FAMILY TOITŪ TE REO

52 WHĀNUI
FAMILY TOITŪ TE REO

54 CREATIVE LEARNING
For students & teachers

56 TALKS + THE CURRY
HOUSE KID
TALKS FILM

58 ŌTAIRONGO
VISUAL ARTS

60 TRANSMISSION
VISUAL ARTS

61 SAFE AS HOUSES
VISUAL ARTS

62 SPLIT LEVEL
VIEW FINDER:
THEO SCHOON AND
NEW ZEALAND ART
VISUAL ARTS

63 SPEAKING SURFACES
VISUAL ARTS

64 HONESTLY SPEAKING:
THE WORD, THE BODY
AND THE INTERNET
VISUAL ARTS

65 QUEER ALGORITHMS
VISUAL ARTS

66 I EXTEND MY ARMS
VISUAL ARTS

67 CHROMOINTERFERENCE
VISUAL ARTS

68 ACCESS & INCLUSION
Booking information for
access patrons & events
in the Access programme

70 SUPPORTERS

76 PLAN YOUR FESTIVAL
Booking & contact information,
festival calendar, festival venues

PLACE DES ANGES

WRITTEN & DIRECTED BY
PIERROT BIDON & STÉPHANE GIRARD

Compagnie
Gratte Ciel

Don't miss the outdoor event of the summer: an evening of pure, unadulterated joy under a sky filled with angels, acrobatics, beautiful music and dreamlike images you'll remember for eternity.

NEW ZEALAND PREMIERE /
AUCKLAND EXCLUSIVE

So breathtaking that it [has] to be seen to be believed.

— The West Australian

Uplifting... [a] word-of-mouth phenomenon... [that] took over the skies before popping up all over Instagram.

— The Guardian (Australia)

Spectacular... the sight of acrobats dressed as angels performing in the night sky is something to behold and treasure.

— The Adelaide Review

Sponsored by

 nzherald.co.nz

97.4
THE HITS
AUCKLAND

IMAGE: GRANT HANCOCK

PLACE DES ANGES

If Groupe F's *Breath of the Volcano* had your pulse racing at the Auckland Domain in 2013, *Place des Anges* will make your heart soar.

Mortgage the house.
Sell your possessions.
Do anything that
makes it possible to
see *Place des Anges*.
It is absolutely
wonderful.

— The Advertiser (Australia)

Capture[s] so much
of the ineffable
wonder of what it
means to be alive.

— The Australian

A sight to behold.

— Hull Daily Mail

As the sun sets over the city,
high above the tree tops, angels
descend from the heavens.

This is **Place des Anges**, a playful, awe-inspiring aerial spectacle performed above thousands of people. The one-of-a-kind creation of French company Gratte Ciel commands the twilight sky with an incredible team of acrobats and dancers – suspended high in the air, beneath the stars and out in the open.

Uplifting, ethereal and totally out of this world, *Place des Anges* has left its mark – and countless memories – wherever it has landed around the globe. The angels land next in Tāmaki Makaurau; for three amazing nights, Auckland Domain is their outdoor playground. Be there to welcome them down to earth and share in the wonder of this very special event.

Upper Field, Auckland Domain

M	T	W	T	F	S	S
March	11	12	13	14	15	
16	17	18	19	20	21	22
23	24	25	26	27	28	29

FRI, SAT, SUN 8.30PM

55mins event,
inc. 40mins aerial performance

This is a standing outdoor performance suitable for all ages. Chairs are not permitted. Includes the use of sustainably sourced and sterilised feathers.

 All performances
[Access & Inclusion info p68](#)

GA / GA gate sales / Child
\$37 / \$39 / \$15

[Book at aaf.co.nz](#)
[Plan Your Festival + Booking info p76](#)

Supported by



NEW ZEALAND PREMIERE / AUCKLAND EXCLUSIVE

LIMBO UNHINGED

Strut & Fret
Production House



— Weekend Notes (Australia)



— The Advertiser (Australia)



— The Advertiser (Australia)

Limbo Unhinged
may be the perfect show...
It has everything.

— The Courier-Mail (Australia)

Supported by **COLENSOBBDO**

SPIEGELTENT SUPPORTED BY
FOUR POINTS BY SHERATON AUCKLAND

**A boundary-pushing
circus production...
showcasing even more talent
and unbelievable abilities.**

— Australian Arts Review

The mad-geniuses behind Festival
blockbuster *LIMBO* are back with a
brand new, wildly unhinged circus-
cabaret extravaganza.

Unleashing pyrotechnics, sword-swallowing
and aerial shenanigans against a pulsating live
soundtrack, this exciting new extravaganza from
circus-cabaret masters Strut & Fret pushes the limits
of circus towards even more unearthly proportions.

Catering to every kind of thrill-seeker, the diverse
global cast includes Coney Island sword swallower
Heather Holliday (USA) and dancing sensation
Hilton Denis (Australia), alongside the acrobatic
expertise of Mikael Bres (France).

Taking *LIMBO* to the next level, **Limbo Unhinged**
has earned rave reviews and sold-out houses
wherever it's toured. Auckland, now it's your turn to
get in on the hottest act in town.



CIRCUS / CABARET
INTERNATIONAL

Spiegeltent, Aotea Square

M	T	W	T	F	S	S
March 11	12	13	14	15		
16	17	18	19	20	21	22
23	24	25	26	27	28	29

WEEK ONE

THU (12) 8.00PM
FRI (13) 7.00PM
SAT (14) 7.00PM
SUN (15) 6.00PM

WEEK TWO

TUE (17) 7.30PM
WED (18) 7.00PM
THU (19) 6.30PM
FRI (20) 7.00PM & 9.30PM
SAT (21) 7.00PM & 9.30PM
SUN (22) 6.00PM

WEEK THREE

TUE (24) 7.30PM
WED (25) 6.30PM
THU (26) 6.30PM
FRI (27) 7.00PM & 9.30PM
SAT (28) 7.00PM & 9.30PM
SUN (29) 6.00PM

1hr 20 mins no interval
Recommended for ages 15+
Contains adult themes

 WED 18 MAR 7.00PM
[Access & Inclusion info p68](#)

Premium GA
\$89

GA / Conc
\$79 / \$73

Book at aaf.co.nz
[Plan Your Festival + Booking info p76](#)

SNOW WHITE

Ballet Preljocaj

CHOREOGRAPHY BY ANGELIN PRELJOCAJ
COSTUMES BY JEAN PAUL GAULTIER
MUSIC BY GUSTAV MAHLER



Deliciously dark...
modern and gripping.

— Limelight (Australia)



Utterly beguiling.

— The Guardian (UK)

Breathtaking.

— The Washington Post

Supported by **VIVA**  **AUCKLAND LIVE**



NEW ZEALAND PREMIERE /
AUCKLAND EXCLUSIVE

High fashion meets iconic fairy tale in this darkly delectable retelling of **Snow White** imagined by acclaimed French choreographer Angelin Preljocaj.

Mirror, mirror on the wall, who in this land is the fairest of all?

Ballet Preljocaj's bewitching transformation of the Brothers Grimm fairy tale is a boldly seductive global hit. Its fresh and sexy take on the timeless conflict between young Snow White and her jealous stepmother, the Queen, is both strikingly sensual and blazingly contemporary – and courtesy of costumes by the legendary fashion designer Jean Paul Gaultier, an incredible visual spectacle too.

Masterminded by revered French choreographer Angelin Preljocaj, this ravishing concoction of dance, design and wearable art has reawakened the classic story's themes of beauty and envy for a new age. Combined with towering sets and the monumental symphonies of Gustav Mahler, *Snow White* is dance on a truly visionary scale.



WITH SUPPORT FROM
PLATINUM PATRONS KENT & GAYE GARDNER
GOLD PATRON FRIEDLANDER FOUNDATION

Kiri Te Kanawa Theatre, Aotea Centre

M	T	W	T	F	S	S
March 11	12	13	14	15		
16	17	18	19	20	21	22
23	24	25	26	27	28	29

WED & THU 7.00PM
FRI & SAT 8.00PM
SUN 5.00PM

1hr 50mins no interval
Recommended for ages 12+
Contains partial nudity

 THU 12 MAR 7.00PM
 T SUN 15 MAR 5.00PM

[Access & Inclusion info p68](#)

Premium / Conc
\$139 / \$125

A Res / Conc
\$119 / \$105

B Res / Conc
\$89 / \$79

C Res / Conc
\$59 / \$54

[Book at aaf.co.nz](#)
[Plan Your Festival + Booking info p76](#)

IMAGES: YANG WANG (MAIN); JEAN-CLAUDE CARBONNE (INSET)



Circus like you have never seen or heard before.

— Edinburgh Guide

CIRCOLOMBIA ACÉLÉRÉ

NEW ZEALAND PREMIERE /
AUCKLAND EXCLUSIVE



This is the circus performance that shows others how it's done. Go.

— The Scotsman



Sensational singing, wild atmosphere.

They've caught the old world big top ethos and doused it in Colombian spirit.

— Fest Magazine

Circus superstars **Circolombia** are here to amaze with their renegade brand of dance, live music and astounding acrobatics.

Welcome to the new revolution. Circolombia, a supercharged company of youthful Colombian artists, has been changing the face of contemporary circus now for over a decade. Their latest phenomenon, **Acéléré**, smashes all preconceptions of circus with a high-risk, adrenalin-fuelled production bursting with Latin fire, urban flavour and heart-stopping energy.

Delivered with the rawness and attitude of South American street life, *Acéléré* turns the spotlight on 14 incredible performers and their endless feats of strength, balance, tumbling and insane pinpoint accuracy. Every gutsy and improbable stunt is staged in the same breath as Circolombia's trademark circus-concert soundscape, a vibrant mixtape of Latin hip-hop and electro cumbia performed live and in the spirit of an infectious dance party.

Rebellious, dynamic and wildly entertaining, *Acéléré* is no ordinary circus. It's simply extraordinary.

PRESENTED BY ARRANGEMENT WITH
ARTS PROJECTS AUSTRALIA



Kiri Te Kanawa Theatre, Aotea Centre

M	T	W	T	F	S	S
March	11	12	13	14	15	
16	17	18	19	20	21	22
23	24	25	26	27	28	29

THU, FRI & SAT 7.00PM
SUN 4.00PM
1hr no interval
Recommended for ages 7+

Premium / Conc / Child
\$69 / \$62 / \$49

A Res / Conc / Child
\$59 / \$54 / \$39

B Res / Conc / Child
\$49 / \$44 / \$29

C Res / Child
\$39 / \$19

Book at aaf.co.nz
Plan Your Festival + Booking info p76

IMAGES: ROBERTO RICCIUTI

BLACK TIES



ILBIJERRI Theatre Company & Te Rēhia Theatre Company

BY JOHN HARVEY & TAINUI TUKIWAHO

DIRECTED BY RACHAEL MAZA & TAINUI TUKIWAHO

Hera Tapuwera, I've never been so serious about anything in my life. Will you marry me?

Two families, two cultures... tumeke!

When Māori corporate hotshot Hera and Aboriginal consultancy entrepreneur Kane locked eyes at a Cultural Awareness session, it was love at first sight. Ambitious and career-focused, Kane and Hera now have their perfect future all mapped out. But there is one thing they can't control... their families!

As the biggest mob of Aunties, Uncles and cousins from both sides of the ditch get worked up for the brownest wedding ever, reality is sinking in. Fast! Will this international love story bring two strong cultures together? Or will it blow Hera and Kane's world apart?

With a peerless cast including Lana Garland, Laughton Kora, Brady Peeti, Uncle Jack Charles, Mark Coles Smith and Tuakoi Ohia, and created by a brilliant team of Aboriginal, Torres Strait Islander and Māori artists, **Black Ties** reimagines the popular wedding rom-com from a distinctively First Nations perspective. Set to a live score of Black anthems and wedding classics, it will be a party to remember.

Black Ties was commissioned by AsiaTOPA, a joint initiative of the Sidney Myer Fund and Arts Centre Melbourne. This project has been assisted by the Australian Government's Major Festivals Initiative, managed by the Australia Council, its arts funding and advisory body, in association with the Confederation of Australian International Arts Festivals Inc., Sydney Festival, Perth Festival, Asia TOPA / Arts Centre Melbourne, New Zealand Festival of the Arts, Auckland Arts Festival, and Brisbane Festival. ILBIJERRI Theatre Company is assisted by the Australian Government through the Australia Council, its arts funding and advisory body, and by Creative Victoria and City of Melbourne.



Waitākere Room, Aotea Centre

M	T	W	T	F	S	S
March	11	12	13	14	15	
16	17	18	19	20	21	22
23	24	25	26	27	28	29

WED, THU & FRI 7.30PM
SAT 2.30PM & 7.30PM
SUN 6.00PM

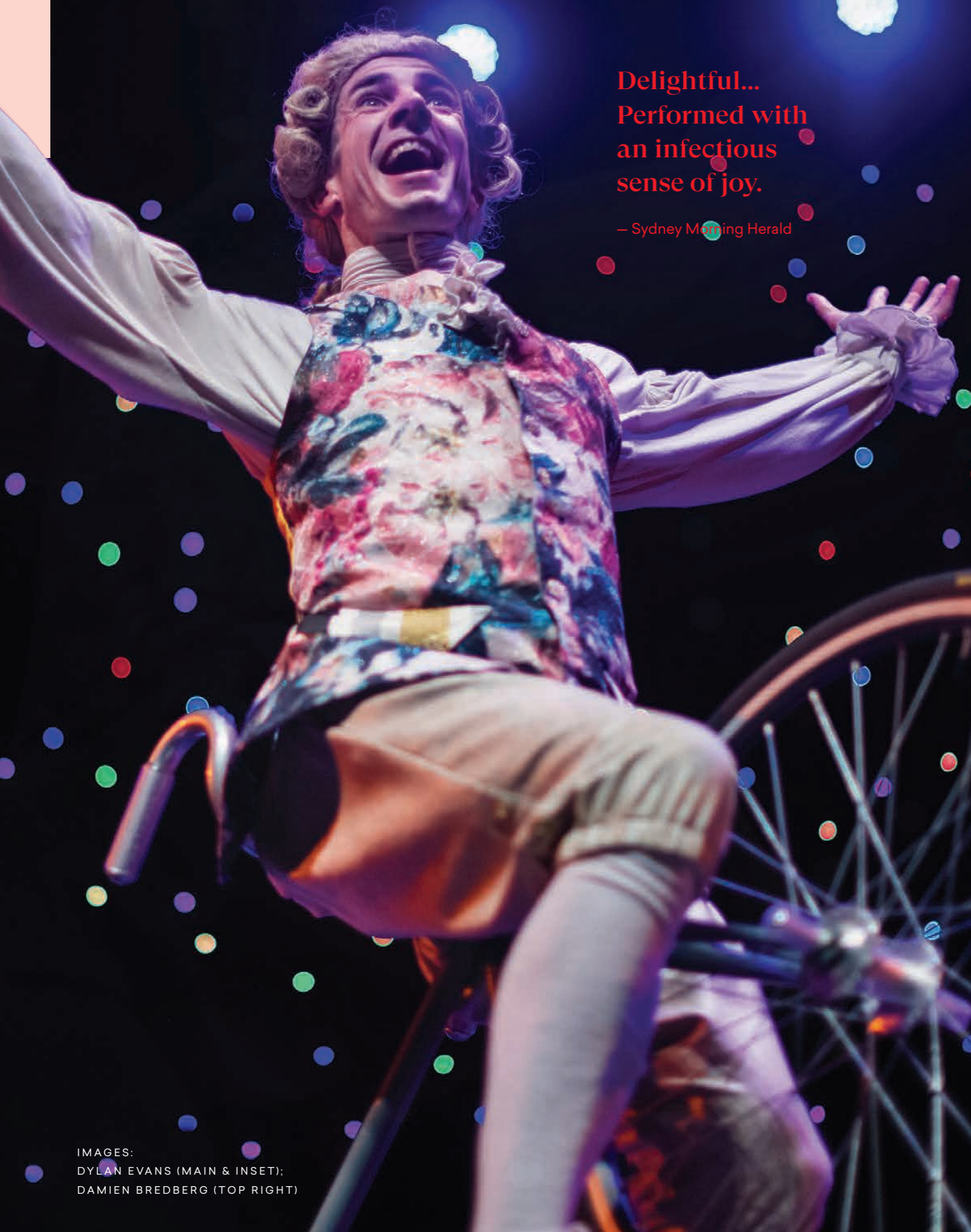
2hrs 45mins approx. inc. interval
Recommended for ages 12+
Contains some adult references and moderate coarse language

T SAT 14 MAR 2.30PM
[Access & Inclusion info p68](#)

GA / Conc
\$59 / \$54

[Book at aaf.co.nz](#)
[Plan Your Festival + Booking info p76](#)

IMAGES: GARTH ORIANDER



Delightful...
Performed with
an infectious
sense of joy.

— Sydney Morning Herald

WOLFGANG'S MAGICAL MUSICAL CIRCUS

NEW ZEALAND PREMIERE

Circa

CREATED BY
YARON LIFSCHITZ WITH
BENJAMIN KNAPTON &
THE CIRCA ENSEMBLE

The thrill of circus,
the mayhem of Mozart.

Straight from the score and onto the stage, Mozart appears amid a storm of powder, tumbling and twirling, as musical mayhem and movement fuse in this family show with a circus twist.

To those who know him, he is Wolfgang, the dart-playing ratbag. To those who are watching and listening, he is the wiggid genius Mozart. Come and discover his irrepressible spirit and vibrant compositions through physical comedy and mischievous antics.

Reinventing the composer's magical music, this skilful and illuminating show features Circa's dexterous daredevil artists and a live accordionist. Watch as the notes are physically lifted off the page as performers bring the renowned compositions to life in a hilarious and high-spirited act young ones will fall head over heels in love with.

Commissioned by The Art Centre Wyong, Circa acknowledges the assistance of the Australian Government through the Australia Council, its arts funding advisory body and the Queensland Government through Arts Queensland.

In partnership with  AUCKLAND LIVE



Manic
and magical.

— The Guardian (UK)

Bruce Mason Centre

M	T	W	T	F	S	S
March 11	12	13	14	15		
16	17	18	19	20	21	22
23	24	25	26	27	28	29

SAT 10.30AM & 12.30PM
SUN 10.30AM & 12.30PM

1 hr no interval
Recommended for ages 3+

R FRI 20 MAR 10.30AM
Access & Inclusion info p68

Adult / Child
\$28 / \$21

Family Pass
\$78

Book at aaf.co.nz
Plan Your Festival + Booking info p76



IMAGES:
DYLAN EVANS (MAIN & INSET);
DAMIEN BREDBERG (TOP RIGHT)

TOITŪ TE REO

Ko te reo te taura
here i te tangata
Language brings
people together

I te Ahurei o tērā tau, i rewa a **TOITŪ TE REO**. Ko te whakamāoritanga o TOITŪ TE REO ko te ū ki te reo kia ita, me te aha, e tūmanako ana mātou ka rangona ko te reo Māori mā roto mai i te ao toi.

Kua auraki mai a TOITŪ TE REO i tēnei tau – ka rangona te reo Māori, ā-taringa mai, ā-whatu mai, ā-roto mai anō i ia rā o te Ahurei.

Mai anō i te hui whakatuwhera i te pō tuatahi, i TIRA, tae atu ki tētahi huihuinga puoro motuhake e rongō ai tō katoa; mai anō i ētahi whakaaturanga reo Māori ki rō kura, ki te tōpūtanga mai o ētahi ringatoi Māori me ētahi hāpori e mahi tahi ana ki te kaupapa o Whānui – mā TOITŪ TE REO te whakaminenga e aronui mai, e rongō ai i te pārekareka, otirā, e whai wāhi pū mai anō.

Tirohia ngā whakaaturanga, ā mātou hōtaka Ako Auaha, Wātea anō, otirā, wherawherahia te maha noa atu mā te taupānga TOITŪ TE REO.

Tukuna te reo kia rere! Kia ita!

Last Festival we launched our **TOITŪ TE REO** programme strand. TOITŪ TE REO translates as holding fast to our language and it is our desire to let the Māori language resonate through the platform of the arts.

This year TOITŪ TE REO is back again – te reo Māori will be heard, seen and felt every day of the Festival.

From our opening night event TIRA, to a special immersive music event; from performances in schools in te reo Māori, to Māori artists and communities working together in our Whānui project – at TOITŪ TE REO audiences can engage, enjoy and participate.

Check out the shows, our Creative Learning and Access & Inclusion programmes and explore more via the TOITŪ TE REO app.

Tukuna te reo kia rere! Kia ita!

Ngā Kaupapa Toitū Te Reo / Toitū Te Reo Events

PAGE 20

TIRA

11 Poutūterangi
11 March

Tukuna ō koutou reo kia rere ngātahi ki ō mātou, kia taiea anō ai tā tātou whakarewa i te Ahurei ki **TIRA** i te Papa o Aotea. Whakapiri mai ki a Hollie Smith, ki te Kapa Haka o Hātea, otirā, ki ētahi tira waiata nō ngā pito huri noa i Tāmaki Makaurau, kia waiata ngātahitia ai tētahi kohinga waiata rongonui. **UTUKORE.**

Let your voices soar with us as we kick off the Festival in style again at **TIRA** in Aotea Square. Join Hollie Smith, the Hātea Kapa Haka and choirs from around Auckland in singing a playlist of iconic waiata. **FREE.**

PAGE 22

KA PŌ, KA WAIATA

18 Poutūterangi
18 March

Whakaarohia tētahi ao e noho nei koe i te pō, ao te pō, he ao e herea pūtia ai te tirohanga tūturu ki rongō kē atu, ā-pā, ā-oro, ā-kare ā-roto anō. He mahinga ngātahi a **Ka Pō, Ka Waiata** e mahi tahi ai ētahi pūkenga puoro ki te auaha i ētahi hua oro, i ētahi taiao oro anō mō te pō.

Imagine a world where darkness is your every day, where true sight relies on sensation, sound and feeling. **Ka Pō, Ka Waiata** is a creative collaboration in which musicians work collaboratively to shape responses and environments of sound for darkness.

PAGE 51

NGĀ MANU RŌREKA

22 Poutūterangi
22 March

Ka huri haere ki ētahi kura i
Tāmaki Makaurau,
17–27 Poutūterangi

Touring schools throughout
Auckland, 17–27 March

Ka auraki mai tētahi tino whakaari i te Kaupeka Reo Māori a Taki Rua Productions. He mea tito nā te pūkōrero whai-tohu, nā Apirana Taylor, he mea whakamāori nā Materoa Haenga, he whakahanumitanga mīharo a **Ngā Manu Rōreka** o te reo Māori me te whakaari ā-tinana, e taea ai e ngāi aroha nui ki te reo me te hunga akoako anō te whai wāhi ki tētahi haere whai hononga, whai tohutohu anō i ngā tīpuna. **UTUKORE.**

A Taki Rua Productions Te Reo Māori Season favourite returns. From award-winning storyteller Apirana Taylor, with translations by Materoa Haenga, **Ngā Manu Rōreka** is a wonderful blend of te reo Māori and physical theatre, allowing language lovers and learners to share in a journey of connection and guidance from ancestors. **FREE.**

PAGE 52

WHĀNUI

Poutūterangi 2020
March 2020

He haerenga tōpū, he mātātoa anō a **Whānui**: he kohinga kaupapa toi e whai wāhi atu ai te tangata, otirā, he tūāhua e piri ai, e whai wheako anō ai tētahi kāhui kanorau motuhake e noho nei ki Tāmaki Makaurau ki ētahi mahinga toi e tau ana ki ngā tini tōpito o ō tātou takiwā kāinga. He **UTUKORE**, he nui mārika hoki ngā huihuinga whakaū i te ora, he pāhekoheko, hei torotoronga hoki mā te hunga hiakai.

Whānui is a communal adventure: a collection of participatory arts projects in which an amazing mix of people who call Auckland home create, join in with and experience artworks in the many spaces and places that form our neighbourhoods. **FREE** and filled with life-affirming, interactive, get-in-amongst-it events.

Supported by



TIRA

FREE FESTIVAL OPENING

Tukuna ō koutou reo kia rere ngātahi ki ō mātou, kia taiea anō ai tā tātou whakarewa i te Ahurei ki **TIRA** i te Papa o Aotea.

Whakapiri mai ki a Hollie Smith, ki te Kapa Haka o Hātea, otirā, ki ētahi tira waiata nō ngā pito huri noa i Tāmaki Makaurau, kia waiata ngātahitia ai tētahi kohinga waiata rongonui.

Tekau mā whā tau ki muri, i raro i te maru o Puketāpapa, ā, mai anō i te kohinga waiata o te kiriata angitu a Toa Fraser, o *No. 2*, i haruru mārika ngā aratuku i a Hollie Smith me tana whakaritenga o te waiata a Don McGlashan, o 'Bathe in the River'. Toru tekau mā whitu wiki tēnei waiata i te rārangi angitu 40 e tau ana, me te aha, kua titia ki ngā ngākau o te motu, ā, kua aroha nuitia a Hollie Smith hei reo makau o Aotearoa. Hei whakatuwhera i te Ahurei Toi o Tāmaki Makaurau mō tēnei tau, ka whakahoungia tēnei kura waiata e Hollie Smith i tāna waiata ki te reo Māori.

Mai i 'Bathe in The River' ki te Waiata Matua o te Motu ka karawhiua ki te reo Māori, atu i tētahi waiata e ū nei ki te rangi o 'Bohemian Rhapsody' ki ētahi waiata rōreka a Hollie Smith, e anga nei tātou ki te tuku ngātahi i ō tātou reo kia ngātoro ki ngā rangi i *TIRA 2020*.

Haere noa mai i te pō tonu ka waiata tahi mai ai, piriri mai rānei ki ngā whakaharatau mā te katoa tōmua atu i te huihuinga nei. E ako tōmua ai koe i ngā reretau me ngā rangi, tikina mai te taupānga o Toitū Te Reo.

E whai māramatanga ai koe ki ētahi pārongo kē atu, ki ētahi akoranga, ki ētahi kupu waiata, ki ngā rā whakaharatau anō, otirā, ki te tiki mai i te taupānga, torohia te paetukutuku aaf.co.nz/tira

Let your voices soar with us as we kick off the Festival in style again at **TIRA** in Aotea Square.

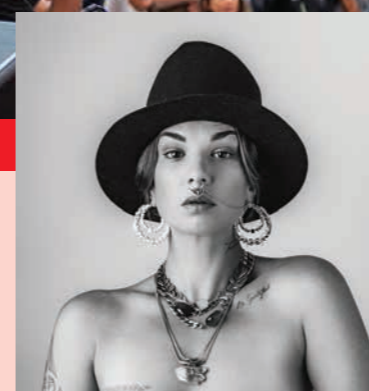
Join Hollie Smith, Hātea Kapa Haka and choirs from around Auckland in singing a playlist of iconic waiata.

14 years ago, amidst the backdrop of Mt Roskill and from the soundtrack of Toa Fraser's hit movie, *No. 2*, Hollie Smith electrified the airwaves with her iconic rendition of 'Bathe in the River', penned by Don McGlashan. The song spent 37 weeks in the top 40 and is now part of the soundtrack of a nation, while Hollie Smith has become one of Aotearoa's most beloved voices. To open this year's Auckland Arts Festival, Hollie Smith is breathing new life into this mighty waiata, by singing a reo Māori version.

From 'Bathe in the River' to the National Anthem in te reo Māori, waiata set to the tune of 'Bohemian Rhapsody', and soulful tunes by Hollie Smith, we are set to sing our hearts out together at *TIRA 2020*.

Turn up on the night and sing-along, or join us for open rehearsals in the lead up to the event. To learn the harmonies and melodies in advance, download the Toitū Te Reo app.

For more information, tutorials, song lyrics, rehearsal dates, and to download the app, visit aaf.co.nz/tira

 TROY KINGI & RIA HALL PERFORMING AT *TIRA*, 7 MARCH 2019 • IMAGE: EU-LEE TEH


**Hollie Smith,
Hātea Kapa Haka &
choirs from around Auckland**

RINGATOHU AUAHA / CREATIVE DIRECTOR: TAMA WAIPARA
 RINGATOHU PUORO / MUSIC DIRECTOR: STEVE RAPANA

Aotea Square

M	T	W	T	F	S	S
		11	12	13	14	15
16	17	18	19	20	21	22
23	24	25	26	27	28	29

WED 6.00PM

45mins no interval

Braille song sheets available
 Access & Inclusion info p68

FREE

Supported by



KA PŌ, KA WAIATA

SONGS IN DARKNESS

WORLD PREMIERE

I te tīmatanga ko te kore, ko te pō.

Whakaarohia tētahi ao e noho nei koe i te pō, ao te pō, he ao e herea pūtia ai te tirohanga tūturu ki rongo kē atu, ā-pā, ā-oro, ā-kare ā-roto anō. He mahinga ngātahi a **Ka Pō, Ka Waiata** e mahi tahi ai ētahi pūkenga puoro ki te auaha i ētahi hua oro, i ētahi taiao oro anō mō te pō.

He haumako te pō, he wāhi auaha, he whakaihiihi, he wāhi mōmona, he hōhonutanga whakapapa anō. I te pō ka waiatatia ko te orokohanganga mai o te ao, ā, ko tā *Ka Pō, Ka Waiata*, he raranga i ngā whakapaparanga o te oro, o te orokohanganga mai anō o te ao...

Ka puta ki te whai ao, ki te ao mārāma. Tihei mauri ora.

He mea waihanga nā ngā pūkenga puoro, nā ngā pūkenga waiata hoki, nā Warren Maxwell rātou ko Teina Moetara, ko Tama Waipara, ko Whirimako Black, ko Horomona Horo, ko Waimihi Hotere, ā, he mea raranga i ngā tukuhanga puoro mataora ki ētahi hopunga oro.

I te pō ka waiatatia ko te orokohanganga mai o te ao.

It was in the
night that
the universe
was sung into
existence.

IN PARTNERSHIP WITH
TE TAIRĀWHITI ARTS FESTIVAL

Supported by



stout trust

In the beginning there was the nothingness, then the night.

Imagine a world where darkness is your every day, where true sight relies on sensation, sound and feeling. **Ka Pō, Ka Waiata** is a creative collaboration in which musicians work collaboratively to shape responses and environments of sound for darkness.

The night is fertile, a charged creative space, a place of richness and layered depth. It was in the night that the universe was sung into existence, and so *Ka Pō, Ka Waiata* brings together the woven layers of sound and cosmology...

To the glimmer of dawn, to the bright light of day where there is life.

Created by artists Warren Maxwell, Teina Moetara, Tama Waipara, Whirimako Black, Horomona Horo and Waimihi Hotere, and combining live performance and soundscapes.

Concert Chamber, Auckland Town Hall

M	T	W	T	F	S	S
March	11	12	13	14	15	
16	17	18	19	20	21	22
23	24	25	26	27	28	29

WED 6.00PM & 8.00PM

1hr no interval

WED 18 MAR 6.00PM

[Access & Inclusion info p68](#)

GA / Conc
\$49 / \$44

[Book at aaf.co.nz](#)

[Plan Your Festival + Booking info p76](#)

NEW ZEALAND PREMIERE /
AUCKLAND EXCLUSIVE

COLD BLOOD

**Michèle Anne De Mey
Jaco Van Dormael
Kiss & Cry Collective**

★★★★★

A bewitching, beautifully evocative work.

— The Arts Desk (UK)

Directed by Michèle Anne De Mey, Jaco Van Dormael • Choreographed by Michèle Anne De Mey, in collective creation with Grégory Grosjean, Thomas Gunzig, Julien Lambert, Sylvie Olivé, Nicolas Olivier, and the participation of Thomas Beni, Gladys Brookfield-Hampson, Boris Cekevda, Gabriella Iacono, Aurélie Leporcq, Bruno Olivier, Stefano Serra

Supported by

Metro

Featuring elaborate scale film sets, tiny props, cinema projection, ace film technicians and a cast of performing hands, **Cold Blood** is a dreamy, compelling marvel.

Cold Blood is an astonishing theatre event that unfolds in miniature, and on the tips of performers' fingers, right before your eyes. Staged in front of an audience and filmed and projected live in perfect synchronicity, it's like nothing you've ever seen before.

Belgian choreographer Michèle Anne De Mey and filmmaker Jaco Van Dormael have formed an inspired collaboration around this singular concept. Captivating cinematic vignettes celebrate life through the absurdity of death: a drive-in movie theatre, a war-ravaged city, a space station, an old Hollywood ballroom with a Fred and Ginger-style tap routine. It's a journey across space and time, and into the enchanted memories of seven characters about to meet their end.

Funny, tragi-comic, philosophical and strangely moving, *Cold Blood* transports us to amazing miniature worlds where the fingers do the walking and a film crew captures it all in real time on a giant movie screen. Performed to music by Schubert, David Bowie, Janis Joplin and Nina Simone, this larger-than-life creation is hands down the most mind-blowing show you'll see at this Festival.

★★★★★

Wonderfully whimsical, exquisitely crafted...
breath-taking, affecting [and] magical.

— The Herald (UK)

★★★★★

Visually...
stunning...
At turns
laugh-out-loud
funny and
poignant.

— The Scotsman

ASB Waterfront Theatre

M	T	W	T	F	S	S
March	11	12	13	14	15	
16	17	18	19	20	21	22
23	24	25	26	27	28	29

WED, THU, FRI & SAT 8.00PM

1hr 15mins no interval
Recommended for ages 12+

A Res / Conc
\$75 / \$69

B Res / Conc
\$65 / \$60

Book at aaf.co.nz
Plan Your Festival + Booking info p76

Executive Producer: Astragales asbl (BE) • **Associated Producer:** Mars, Mons Arts de la Scène (BE), Théâtre de Namur (BE) • **Co-producers:** Charleroi Danse (BE), la Fondation Mons 2015, KVS (BE), Les Théâtres de la Ville de Luxembourg (LUX), le Printemps des comédiens (FR), Torino Danza (IT), Canadian Stage (CA) Théâtre de Carouge-Atelier de Genève (CH), Théâtre des Célestins (FR) • With the support of the Fédération Wallonie Bruxelles – Service de Danse
International Touring Agent: Menno Plukker Theatre Agent Inc.

A family battles extreme weather and intrepid filmmakers brave the Arctic wilds in this ingenious, visually-inspired portrait of humanity at the mercy of Mother Nature.

Chaliwaté Company Focus Company

An ordinary family is about to spend their Sunday together. But the walls are shaking, strong winds and torrential rain rage outside and the storm has only just begun. Meanwhile, somewhere near the North Pole, three wildlife reporters are doing their best to document the apocalypse by filming the Earth's last living species: three wild animals on the brink of extinction.

From physical theatre trailblazers Chaliwaté and Focus – a Belgian collaboration uniting the talents of brilliant puppeteers and technical geniuses of the stage – **Dimanche** is a pure gem of visual and storytelling imagination. Centred on the planet's climate change crisis, this meticulously detailed show stirs emotion and wonder in equal measure, as performers guide intricate miniatures and lifelike puppets through richly cinematic sets to evoke a world in peril.

Developed from the award-winning *Backup* (Total Theatre Award for Physical & Visual Theatre, Edinburgh Fringe 2018), the newly commissioned *Dimanche* is a gorgeous piece of theatre wizardry, and a witty reminder to heed the warning signs of global warming.



[An] exquisite, heartbreaking show
[with] abundant wit and elegance.

– The Arts Desk on *Backup*

A jewel of creativity
and humour.

– Le Suricate Magazine on *Backup*

WRITTEN & DIRECTED BY
JULIE TENRET, SICAIRE DURIEUX &
SANDRINE HEYRAUD

Co-produced with Le Théâtre les Tanneurs, Le Théâtre de Namur, La Maison de la Culture de Tournai/Maison de la Création, Le Sablier – IFS (France), Arts and Ideas New Haven (USA), Adelaide Festival (Australia), Auckland Arts Festival (NZ) and the Coop ASBL.

ASB Waterfront Theatre

M	T	W	T	F	S	S
March 11	12	13	14	15		
16	17	18	19	20	21	22
23	24	25	26	27	28	29

WED, THU, FRI, & SAT 8.00PM
SUN 4.00PM

1hr 20mins no interval
Recommended for ages 9+

A Res / Conc
\$69 / \$64

B Res / Conc
\$59 / \$55

Book at aaf.co.nz
Plan Your Festival + Booking info p76



A must see.

– Tearaway (NZ)

This show is pure oratory and storytelling at its finest.

– Theatrescenes (NZ)



UPU

Silo Theatre

CURATED BY GRACE TAYLOR
DIRECTED BY FASITUA AMOSA

“Come home to the sea. She has a big heart: she adopts anyone who loves her.”
– *Our Sea of Islands*, Epeli Hau’ofa

The world of Oceania is not small. From the energetic volcanoes of O’ahu to the southern reaches of Aotearoa, she is borderless and vast – and growing bigger by the day. After decades of dismissal and disconnection, her children are closer than ever. It’s time for a reunion.

Silo Theatre’s first production for 2020 brings the wealth and power of Pacific literature to roaring theatrical life. Curated by award-winning poet Grace Taylor and led by powerhouse director Fasitua Amosa, **UPU** gives the stage to Oceania’s most electrifying poetry. Ben Brown, Karlo Mila, Albert Wendt and more: *UPU* is for the trailblazers, the icons and the new writers transforming Aotearoa today.

Following two knock-out Matariki seasons at the Basement Theatre, *UPU* is a remix, a re-imagining, an all-star line-up of leading Māori and Pasefika performers reviving the words of our literary legends and bellowing out the proclamations and provocations of the next game-changing generation.

Rangatira, Q Theatre

M	T	W	T	F	S	S
March	4	5	6	7	8	
9	10	11	12	13	14	15
16	17	18	19	20	21	22
23	24	25	26	27	28	29

WEEK ONE

THU 7.30PM **PREVIEW**
FRI & SAT 7.30PM
SUN 5.00PM

WEEK TWO

TUE – FRI 7.30PM
SAT 5.00PM & 8.00PM
SUN 5.00PM & 8.00PM

1hr 10mins no interval
Recommended for ages 15+
Contains strong language and adult themes

Premium / Conc
\$55 / \$49

A Res / Conc
\$45 / \$39

Preview
\$35

Book at aaf.co.nz

Plan Your Festival + Booking info p76

CO-PRODUCED BY
AUCKLAND ARTS FESTIVAL & SILO THEATRE

NEW ZEALAND PREMIERE / AUCKLAND EXCLUSIVE

MOUTHPIECE

Traverse Theatre Company

BY KIERAN HURLEY
DIRECTED BY ORLA O'LOUGHLIN
ASSOCIATE DIRECTOR: KATHERINE NESBITT



Magnificent. Brilliantly acted and tautly directed.

— Sunday Times (UK)



A gripping, truthful play for our times.

— The Stage (UK)



Visceral, emotional and totally involving...
Extraordinary theatre.

— BritishTheatre.com



Following sold out, award-winning Edinburgh Fringe performances, Traverse Theatre Company's gripping, critically-acclaimed sensation about class, culture and appropriation comes to Auckland.

Standing on the edge of Edinburgh's Salisbury Crags cliff face, a woman takes a step forward into the air. A teenage boy pulls her back. Two lives are changed forever.

Libby whiles away her days in New Town cafés and still calls herself a writer. Declan is a talented young artist struggling with a volatile home life on a deprived estate. As they form an uneasy friendship, complicated by class and culture, Libby spots an opportunity to really make a difference – and put her career back on track too.

She needs his story. But does she have the right to it?

Frank, unflinching and threaded with unexpected humour, **Mouthpiece** takes a look at two different sides of Edinburgh that exist in ignorance of one another, and asks whether it's possible to tell someone else's story without exploiting them along the way.

From the theatre geniuses behind 2019 Festival firecracker *Ulster American*, this powerhouse play – winner of the prestigious Carol Tambor Best of Edinburgh Award – will spark conversations about art, privilege and responsibility long after its thrilling conclusion.

SUPPORTED BY CREATIVE SCOTLAND,
THE CITY OF EDINBURGH COUNCIL,
BRITISH COUNCIL NEW ZEALAND
AND Q THEATRE

Rangatira, Q Theatre

M	T	W	T	F	S	S
March 11	12	13	14	15		
16	17	18	19	20	21	22
23	24	25	26	27	28	29

WEEK ONE

THU, FRI & SAT 7.30PM
SUN 2.00PM

WEEK TWO

MON, WED, THU & FRI 7.30PM
SAT 3.00PM & 7.30PM

1hr 30mins no interval

Recommended for ages 16+
Contains frequent strong language, descriptions of violence, scenes of a sexual nature, references to suicide, and haze

A Res / Conc
\$59 / \$54

B Res / Conc
\$49 / \$45

C Res
\$39

Book at aaf.co.nz
Plan Your Festival + Booking info p76

NEW ZEALAND PREMIERE / AUCKLAND EXCLUSIVE

Barry McGovern in **WATT** by Samuel Beckett



A gem of a show... one of the greatest Beckett interpreters in the world.

– Time Out (Australia)



Anyone who cares about acting should seize the chance to see McGovern perform.

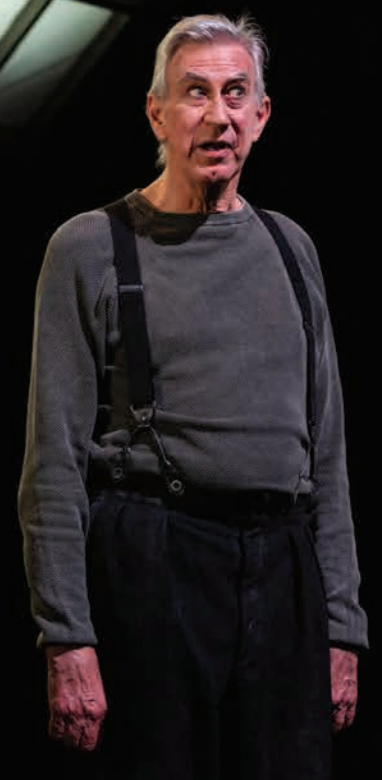
– The Age (Australia)

Irish actor and legendary Samuel Beckett expert Barry McGovern performs his exceptional stage adaptation of the novel **Watt** for the first time in New Zealand.

Arriving in the countryside, *Watt* begins a slow, existential trek to the home of Mr Knott. But how will this itinerant manservant cope when he reaches the residence of his unseen employer, with a confounding list of duties and a collection of extraordinary characters?

The great Barry McGovern has received acclaim around the globe for his one-man performance since 2010, and it remains among the finest, funniest and most popular Beckett interpretations ever. Capturing the essence of the writer's dark worldview while amplifying his scintillating humour and wordplay, *Watt* will have you in raptures contemplating the absurdity of life – and discovering there's so much more to Beckett on stage than *Waiting for Godot*.

ADAPTED BY BARRY MCGOVERN
DIRECTED BY TOM CREED
SET & LIGHTING DESIGN BY SINÉAD MCKENNA
COSTUME DESIGN BY JOAN O'CLERY



ASB Waterfront Theatre

M	T	W	T	F	S	S
March 11	12	13	14	15		
16	17	18	19	20	21	22
23	24	25	26	27	28	29

WED, THU*, FRI & SAT 8.00PM
SUN 4.00PM

1hr no interval
*Includes post-show talk with Barry McGovern and Tom Creed

SUN 29 MAR 4.00PM
Access & Inclusion info p68

A Res / Conc
\$69 / \$64

B Res / Conc
\$59 / \$55

Book at aaf.co.nz
Plan Your Festival + Booking info p76

SUPPORTED BY CULTURE IRELAND

IMAGES: PIA JOHNSON

BLACK LOVER

By Stanley
Makuwe

Auckland
Theatre
Company

DIRECTED BY ROY WARD

WORLD PREMIERE

“We must make it possible for every individual to lead the good life, to win a place in the sun. We are in danger of becoming a race of fear-ridden neurotics – we who live in the finest country on Earth.”

Ex-pat New Zealander Sir Garfield Todd said these words in his final speech as Prime Minister of Rhodesia in 1958. Ousted from politics for being a “black lover”, Todd’s ongoing fight for racial equality and opposition to white minority rule led to his house arrest in 1965, the starting point for Makuwe’s story.

Confined to his home, with the civil war raging close by and separated from his wife and children who have fled abroad, Todd and his family’s servant, Steady, confront the uncertainties of their precarious lives.

Zimbabwean Stanley Makuwe migrated to New Zealand in 2002. An award-winning playwright, Makuwe combines writing with a career in psychiatry. **Black Lover** brings to life a great New Zealander and explores how two men stand with courage against terror in a nation experiencing deep racial divides.

Black Lover was proudly developed with the support of Auckland Theatre Company.

Loft, Q Theatre

M	T	W	T	F	S	S
March	4	5	6	7	8	
9	10	11	12	13	14	15
16	17	18	19	20	21	22
23	24	25	26	27	28	29

WEEK ONE

FRI 7.00PM **PREVIEW**
SAT 7.00PM

WEEKS TWO & THREE

TUE – SAT 7.00PM
SUN 4.00PM

WEEK FOUR

TUE – FRI 7.00PM
SAT 2.00PM & 7.00PM
SUN 4.00PM

Runs until 4 April. For additional times and dates, visit atc.co.nz

1hr 10mins no interval

Adult from \$44

Senior from \$39

Conc from \$30

Groups from \$34

Book at aaf.co.nz

Plan Your Festival + Booking info p76

BABBLE

Massive
Company

WORLD PREMIERE

The beeping and buzzing of technology, noisy traffic, the incessant shouting of social media – it never shuts up. Caught in this constant babble, how do we find stillness?

This is the starting point for Massive Company’s newest devised work, directed by longtime Massive collaborators Scotty Cotter and Carla Martell.

Babble brings dynamic physicality, inventive imagery, a multilayered musical soundscape and a formidable cast of 25 young South Auckland voices to the Māngere Arts Centre stage. Drawing on the unique experiences and stories from their own lives, the performers take us on an uplifting journey through the many interruptions of modern life.

“In our productivity age of perpetual motion, it’s increasingly hard to honour stillness, to build pockets of it into our lives, so that our faith in beauty doesn’t become half-hearted, lopsided, crippled.” – Pico Iyer

Māngere Arts Centre

M	T	W	T	F	S	S
March	11	12	13	14	15	
16	17	18	19	20	21	22
23	24	25	26	27	28	29

WEEK ONE

WED (18) 7.00PM
THU (19) 7.00PM
FRI (20) 7.00PM
SAT (21) 2.00PM & 7.00PM

WEEK TWO

FRI (27) 7.00PM
SAT (28) 7.00PM

1hr 10mins no interval

Eq FRI 27 MAR 7.30PM
Eq WED 1 APR – Workshop
Access & Inclusion info p68

GA / Conc
\$25 / \$18

Book at aaf.co.nz

Plan Your Festival + Booking info p76

NEW ZEALAND PREMIERE / AUCKLAND EXCLUSIVE



LAGRIME DI SAN PIETRO

Los Angeles Master Chorale

COMPOSED BY ORLANDO DI LASSO
CONDUCTED BY GRANT GERSHON
DIRECTED BY PETER SELLARS

A major accomplishment for music history.

— Los Angeles Times

[A] stunning performance. This beautiful Renaissance work was a triumph.

— Sydney Morning Herald

Orlando di Lasso's heavenly masterpiece soars to breathtaking new heights under Los Angeles Master Chorale's spine-tingling a cappella staging, devised by renowned theatre director Peter Sellars.

An achingly beautiful choral work too sublime to put into words, *Lagime di San Pietro* was the great Renaissance composer Orlando di Lasso's final and most famous composition. Completed just before di Lasso's death, it conveys a powerful sense of mortality while vividly illuminating the Biblical story of St Peter, whose grief after he denies Christ surges through this profoundly moving cycle of 20 madrigals (songs).

Cementing their place as one of the world's finest choral ensembles, the outstanding Los Angeles Master Chorale has taken di Lasso's sacred polyphonic epic to the highest plane imaginable. Under Peter Sellars' direction, their spine-tingling rendition matches seamlessly with elegant stage movement – a simple yet striking theatrical interpretation that demands near super-human vocal skill from the 21 singers.

For one special night only, experience the emotional riches of di Lasso's crowning glory and the supreme talents of the Los Angeles Master Chorale in perfect harmony.

Great Hall, Auckland Town Hall

M	T	W	T	F	S	S
March 11	12	13	14	15		
16	17	18	19	20	21	22
23	24	25	26	27	28	29

FRI 7.30PM
1hr 20mins no interval

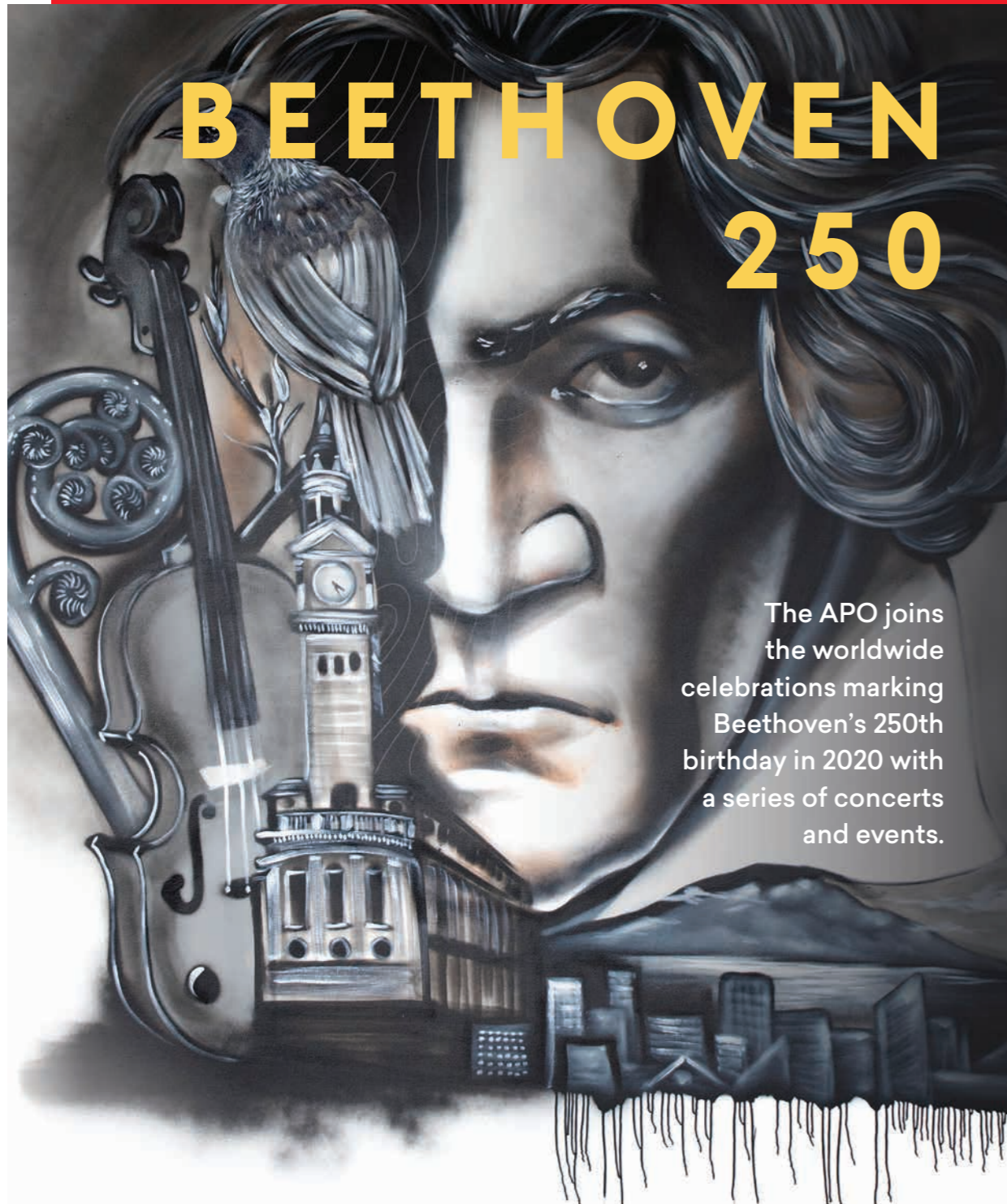
Premium
\$119 / \$109

A Res / Conc
\$99 / \$89

B Res / Conc
\$79 / \$73

C Res
\$49

Book at aaf.co.nz
Plan Your Festival + Booking info p76



BEETHOVEN 250

The APO joins the worldwide celebrations marking Beethoven's 250th birthday in 2020 with a series of concerts and events.

Auckland Philharmonia Orchestra

NINE SYMPHONIES ACROSS FOUR CONCERTS

- #1: THE CLASSICIST SYMPHONY NO.1, 2 & 3
- #2: THE ROMANTIC SYMPHONY NO.4 & 5
- #3: THE REVOLUTIONARY SYMPHONY NO.6 & 7
- #4: THE RADICAL SYMPHONY NO.8 & 9

PRESENTED BY AUCKLAND PHILHARMONIA ORCHESTRA
IN ASSOCIATION WITH AUCKLAND ARTS FESTIVAL & AUCKLAND LIVE

BEETHOVEN'S BIG BIRTHDAY BASH

Calling musicians of all ages and skill levels who love Beethoven! This is your chance to join Ludwig's birthday celebrations with our community play-in – **Beethoven's Big Birthday Bash**.

For this special event, community and student musicians will work together with their APO counterparts to create a mass community orchestra and choir performing selected extracts from the Ninth Symphony, led by Giordano Bellincampi. Music will be specially arranged by APO Communities Composer Ryan Youens so that everyone can join in.

Great Hall, Auckland Town Hall
SUN 15 MAR 2.30PM
2hrs 30mins approx. inc. intervals
Register your interest at aaf.co.nz/birthdaybash
FREE

PRESENTED BY
AUCKLAND PHILHARMONIA ORCHESTRA &
AUCKLAND ARTS FESTIVAL
IN ASSOCIATION WITH AUCKLAND LIVE

Beethoven 250 will be a fantastic festival within the Festival. The centrepiece will see the Auckland Philharmonia Orchestra (APO) performing the complete cycle of nine Beethoven symphonies in four concerts over nine days, led by APO Music Director Maestro Giordano Bellincampi, and culminating in a very special performance of the Ninth Symphony featuring New Zealand soloists Madeleine Pierard, Kristin Darragh, Amitai Pati and Teddy Tahu Rhodes.

In addition to the symphony cycle there will be a variety of exciting free and community events celebrating Beethoven's legacy and connecting him to our city and our people. This includes **Ludwig Reflected**, a free chamber concert and speaker series featuring new Beethoven-inspired works by New Zealand composers and the chance to delve deeper into the fascinating life and times of the great composer; a series of access and inclusion initiatives; and a community **Big Play-In** for musicians of all skill levels (see opposite).

Great Hall, Auckland Town Hall

M	T	W	T	F	S	S
						15
					21	22
23	24	25	26	27	28	29

SAT (21) 7.30PM THE CLASSICIST
TUE (24) 7.30PM THE ROMANTIC
THU (26) 7.30PM THE REVOLUTIONARY
SUN (29) 5.00PM THE RADICAL

Deluxe Adult \$139

Adult from \$59

Senior from \$55

Student from \$29

Book at aaf.co.nz
Plan Your Festival + Booking info p76

LUDWIG REFLECTED

The APO has asked four New Zealand composers to respond to Beethoven's music. To accompany these performances, they've invited guest speakers to offer their perspectives. Join the APO for an hour of stimulating, thought-provoking music, performed by the talented APO Young Achievers, and opinions on the life, the music, the times, and the legacy of this colossal figure in Western art.

Concert Chamber, Auckland Town Hall
MON 23, WED 25 & FRI 27 MAR 6.00PM
Reserve your place at aaf.co.nz/ludwigreflected
FREE

AMANDA PALMER

THERE WILL BE NO INTERMISSION

Heartfelt, shocking, hilarious, and thoroughly arresting.

— Spectrum Culture (USA)

The unapologetic front-woman of The Dresden Dolls brings her critically-acclaimed one-woman show to Auckland – a night of piano, pain and laughter you must experience live.

Emphatic artist, feminist and singer-songwriter **Amanda Palmer**, a cult hero to her adoring fans, has conjured a searing and infectious masterpiece in **There Will Be No Intermission**. A response to global anxieties and the #MeToo movement, as well as personal grief and motherhood, this wise and witty new album is resonating with audiences around the world, and has furthered Palmer's passionate following wherever she tours it.

Commanding the stage alone and performing simply with a grand piano and ukulele, Palmer's intensely intimate show offers an unforgettable synergy of triumphant anthems including 'Drowning in the Sound' and 'Voicemail for Jill', and emotionally raw monologues, at once brave, inspiring and relatable in their honesty. Heart-rending and unflinching, don't miss the naked truth of Palmer's songs and stories as they were meant to be heard and felt – live and in the flesh.

Hollywood Avondale

M	T	W	T	F	S	S
March 11	12	13	14	15		
16	17	18	19	20	21	22
23	24	25	26	27	28	29

Amanda Palmer on stage
THU & FRI at 7.00PM

3–4hrs approx inc. interval
Recommended for ages 13+
Contains mature themes
and strong language

Allocated / Conc
\$75 / \$69

Book at aaf.co.nz
Plan Your Festival + Booking info p76

IMAGE: KAHN AND SELESNICK

WORLD PREMIERE SEASON

ESTÈRE

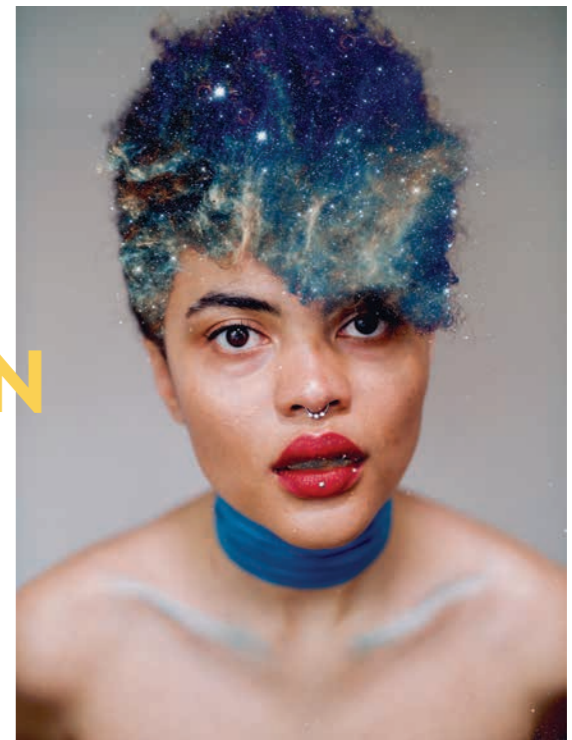
INTO THE BELLY OF CAPRICORN

IN COLLABORATION WITH
SARA BRODIE & JO KILGOUR

With a flair for exploring uninhabited terrain, the captivating and idiosyncratic **Estère** unveils her latest music – and an exciting new live performance concept – at the Spiegeltent this summer.

Estère, aka the Empress of Electric Blue Witch-Hop, is one of Aotearoa's finest acts. And if you've yet to discover her transfixing blend of velvety vocals and cross-pollinating sonic landscapes, she's also one of music's best kept secrets. A high-flying artist who's conquered Europe, toured the world and opened for the likes of Grace Jones and Erykah Badu, Estère's innovative approach to music and performance is something not to be missed.

Into the Belly of Capricorn is an inspired performance work that braids together theatre, set-design, lighting and costume into a contemporary live-music show unlike anything else, featuring Estère and her powerhouse band. Luxuriating in the human unconscious, Estère's boldest outing yet is shaped by the immense talents of award-winning director Sara Brodie, lighting designer Jo Kilgour, and audio-visual creative Kaysha Bowler. Be among the first to welcome this uniquely theatrical offering within the realm of live music into the world.



[A] funny, charming, gracious and articulate performer. — The 13th Floor (NZ)

Spiegeltent, Aotea Square

M	T	W	T	F	S	S
March 11	12	13	14	15		
16	17	18	19	20	21	22
23	24	25	26	27	28	29

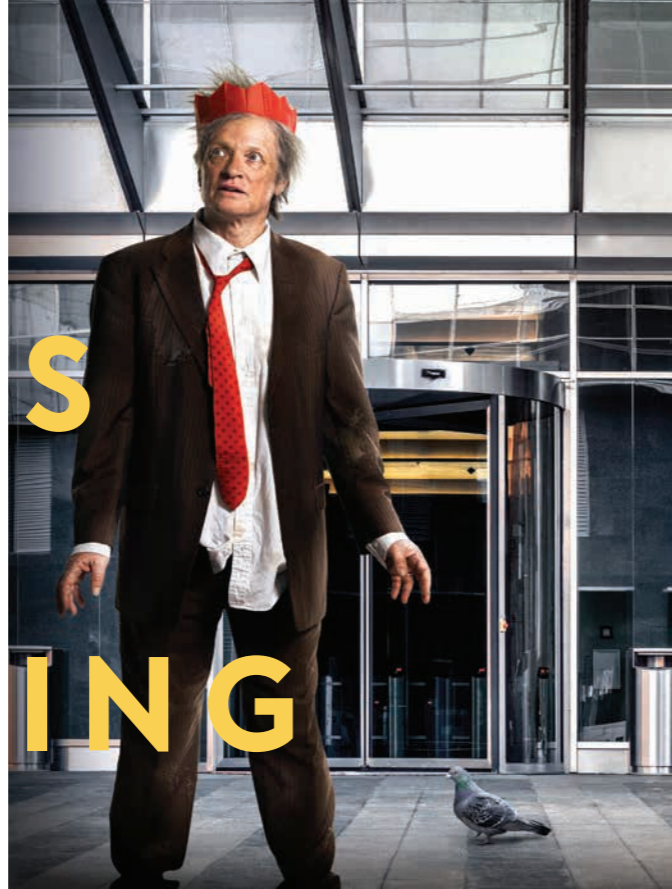
Estère on stage at 9.30PM

GA / Conc
\$49 / \$44

Book at aaf.co.nz
Plan Your Festival + Booking info p76

IMAGE: PAASCALINO SCHALLER

EIGHT SONGS FOR A MAD KING



New Zealand Opera

MUSIC BY SIR PETER MAXWELL DAVIES
TEXT BY RANDOLPH STOW AND GEORGE III
DIRECTED BY THOMAS DE MALLET BURGESS

Experience opera outside the box.

Get outside the box of opera as you know it with this innovative indoor/outdoor staging of Sir Peter Maxwell Davies' "astonishing work" (*Classical Source*) **Eight Songs for a Mad King**.

This new production by New Zealand Opera, directed by Thomas de Mallet Burgess and designed by Robin Rawstorne, sees a King in distress transformed into a modern corporate everyman as a disarming device to explore our complicated relationship with mental health and power. As an added twist, you will experience the action both up close, and from outside with only a window separating you and the King.

Maxwell Davies' iconic score derives from the songs King George III played on his mechanical organ and attempted to train his bullfinches to sing. The music requires a baritone of extraordinary technique to sing over five octaves, with New Zealander Robert Tucker fit for the challenge. Partnering with the ground-breaking contemporary music ensemble Stroma, conducted by Hamish McKeich, this modern take on opera promises to be a bold and immersive experience.

These performances of *Eight Songs for a Mad King* by Sir Peter Maxwell Davies are given by permission of Hal Leonard Australia Pty Ltd, exclusive agents for Boosey & Hawkes Music Publishers Ltd of London.

PRESENTED BY NEW ZEALAND OPERA
IN ASSOCIATION WITH AUCKLAND ARTS FESTIVAL
& NEW ZEALAND FESTIVAL OF THE ARTS

Ellen Melville Centre

M	T	W	T	F	S	S
March	11	12	13	14	15	
16	17	18	19	20	21	22
23	24	25	26	27	28	29

All performances 8.30PM

1hr 15 mins inc. interval
Contains themes relating to mental distress

GA
\$79

Book at aaf.co.nz
Plan Your Festival + Booking info p76

CLARION:



MUSIC BY EVE DE CASTRO-ROBINSON

A clarion call to arms across oceans; an alarm clock to wake us up to climate change and rising sea levels.

Foremost New Zealand composer Eve de Castro-Robinson considers the future of our next generation in her newest concerto, **Clarion**, featuring Bede Williams on trumpet and pūtātara (conch shell) with the Auckland Chamber Orchestra, conducted by Peter Scholes.

Research shows that an understanding of our warming climate can be seen in the carbon being layered in the growth of the conch shell. Like the shell, de Castro-Robinson builds up instrumental layers in *Clarion* building gradually to its cataclysmic climax with the trumpeter utilising a range of calls and cries, keening, moaning, alerting, and sounding a warning to us of our need to act in the current climate emergency.

Fittingly, in creating this work, de Castro-Robinson and Scotland-based, New Zealand-born Williams collaborated across the seas.

This very special one night only performance is exclusive to Auckland Arts Festival and follows the world premiere at the University of St Andrews in Scotland.

The concert will include a selection of other works composed by Eve de Castro-Robinson.

Spiegeltent, Aotea Square

M	T	W	T	F	S	S
March	11	12	13	14	15	
16	17	18	19	20	21	22
23	24	25	26	27	28	29

MON 7.00PM

1hr no interval

GA / Conc
\$49 / \$44

Book at aaf.co.nz
Plan Your Festival + Booking info p76

ALDOUS HARDING

WEYES BLOOD

PURPLE PILGRIMS



IMAGES: CLARE SHILLAND
(ALDOUS HARDING, LEFT);
KATHRYN VETTER MILLER
(WEYES BLOOD, CENTRE);
OLIVIA RENOUF
(PURPLE PILGRIMS, RIGHT)



Celebrate songwriting of the highest calibre with this rare triple bill headlined by 2019 APRA Silver Scroll Award winner Aldous Harding.

Aldous Harding is back at Auckland Arts Festival after captivating audiences in 2018. One of contemporary music's most remarkable voices, she continues to create waves throughout the world. Among 2019's best albums, her critically-acclaimed *Designer* – which includes the Silver Scroll-winning 'The Barrel' – follows up the hypnotic *Party* with even more "fascinating and frightening, highly eccentric and blisteringly beautiful" songs (*Q Magazine*, ★★★★★).

American psychedelic-folk artist **Weyes Blood**, aka Natalie Mering, is in stiff competition with Harding for the album of the year mantle with her latest release, *Titanic Rising*. A spellbinding performer and songwriter whose storytelling is "steeped in the magic stuff of fantasies and daydreams" (*NPR*), Mering's sound evokes artists as varied as the Kinks, Enya, Hoagy Carmichael, Brian Eno and Joni Mitchell. An enchanting, buzzworthy talent.

Harding's Flying Nun labelmates **Purple Pilgrims** carry the songwriting torch through a mesmerising dreamscape of celestial pop, folk and atmospheric jazz. Hailing from Christchurch, the magnetic sister duo of Clementine and Valentine Nixon have transported the dream-pop genre into earthy, textural realms, and completes this stellar all-female line-up as a rising star of the local and international indie scene.

Great Hall, Auckland Town Hall

M	T	W	T	F	S	S
March 11	12	13	14	15		
16	17	18	19	20	21	22
23	24	25	26	27	28	29

Artists on stage from 7.30PM

GA
\$89

Book at aaf.co.nz
Plan Your Festival + Booking info p76

@PEACE AND THE PLUTONIAN NOISE SYMPHONY



Six years on from the creation of New Zealand cult classic album *@Peace and the Plutonian Noise Symphony*, **@Peace** reunites for a special one-off live performance.

@Peace has managed something quite stunning here.

— Off The Tracks
on the album *@Peace and the Plutonian Noise Symphony*

Back in 2014, Tom Scott (Home Brew) with Lui Tuiasau on vocals, and a musical soundscape laid down by Christoph El Truento, Hayden 'Dandruff' Dicky and Brandon Haru as **@Peace**, released their first and only full-length album. *@Peace and the Plutonian Noise Symphony* was a critically acclaimed modern masterpiece that broke boundaries, but also broke the group up. The album, founded on the fear of finality, was ironically their last.

Now they are reuniting to bring to Auckland Arts Festival a 2020 reinterpretation of the Taite Prize-nominated opus in its entirety, accompanied by special musical guests including Riki Gooch (Trinity Roots) on drums, with visuals by Tomek Bogdanowicz and lighting by Brad Gledhill.

The live show promises to reflect the album: a gumbo of existential sci-fi psychedelia inspired by Sun Ra, Pink Floyd, Can and Funkadelic, while expanding on where they left off. Performed in the Spiegeltent, this one-off show is a must for music lovers and sci-fi nerds.

Spiegeltent, Aotea Square

M	T	W	T	F	S	S
March 11	12	13	14	15		
16	17	18	19	20	21	22
23	24	25	26	27	28	29

@Peace on stage at 9.30PM

GA / Conc
\$49 / \$44

Book at aaf.co.nz
Plan Your Festival + Booking info p76

IMAGE: HENRY ENGELBRECHT



It's impossible to spend an hour with them and not leave with a big smile on your face. — In Daily (Australia)

These Triple Award-winning global gospel superstars have been spreading joy and lifting spirits since 2002.

Winner of the 2019 Grammy Award for Best World Music Album for *Freedom*, **Soweto Gospel Choir** brings its "Freedom" concert to Auckland for the very first time.

In this uplifting and joyous repertoire, the choir will perform a rousing programme of songs celebrating the life of the father of their Rainbow Nation, Nelson Mandela, as well as international gospel classics including a spine-tingling take on Leonard Cohen's 'Hallelujah' and an extraordinary rendition of 'Amazing Grace'.

Hailing from Soweto (South West Township), the home of Mandela and South Africa's democratic movement, Soweto Gospel Choir continues to inspire audiences around the world with its powerful blend of African gospel, freedom songs and international classics. A line-up comprising South Africa's best vocalists, these uplifting performers have shared the stage with some of the biggest names in music including U2, Aretha Franklin, Stevie Wonder, Robert Plant, Celine Dion, Red Hot Chili Peppers and Josh Groban.

PRESENTED BY ANDREW KAY AND ASSOCIATES
IN ASSOCIATION WITH AUCKLAND ARTS FESTIVAL

Kiri Te Kanawa Theatre, Aotea Centre

M	T	W	T	F	S	S
March	11	12	13	14	15	
16	17	18	19	20	21	22
23	24	25	26	27	28	29

WED 8.00PM

1hr 50mins inc. interval

Premium / Conc
\$97 / \$89

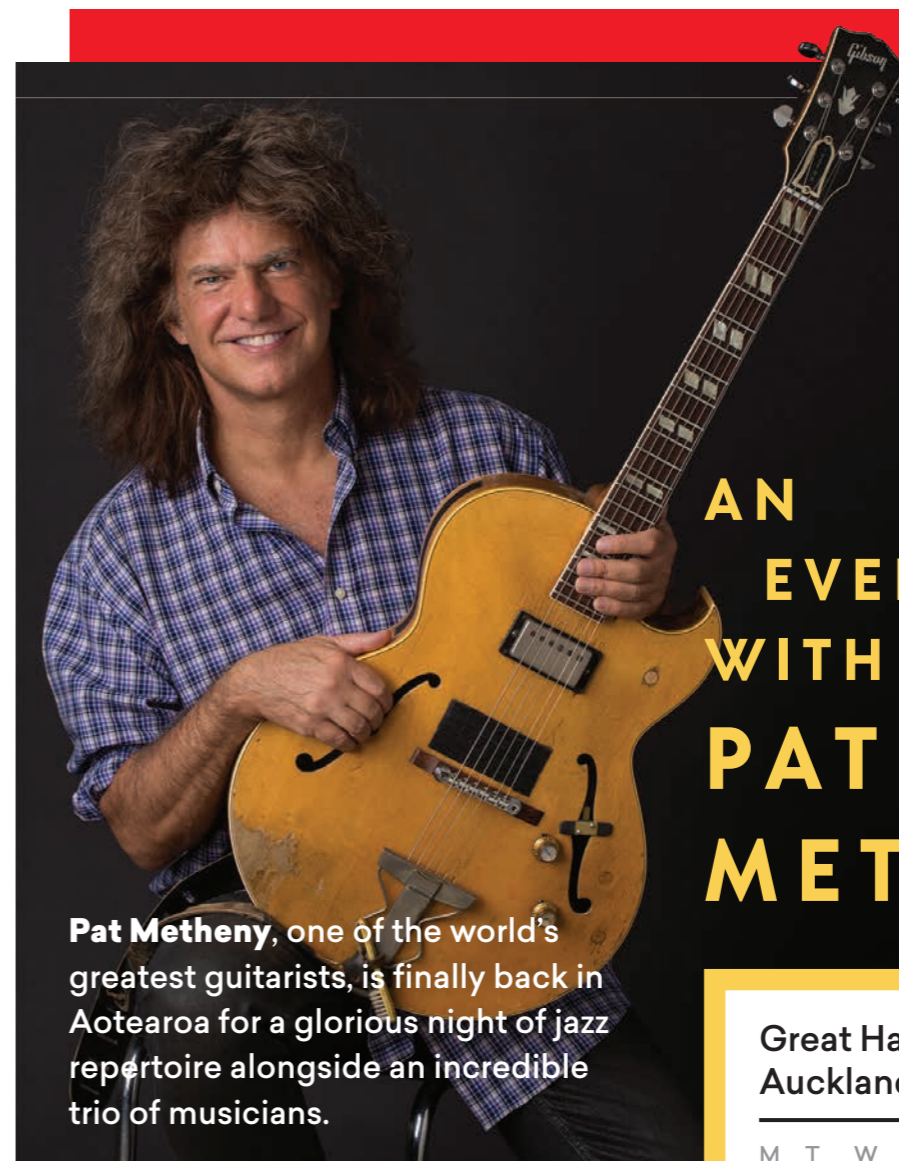
A Res / Conc
\$91 / \$81

B Res / Conc
\$81 / \$71

C Res / Conc
\$69 / \$57

Book at aaf.co.nz
Plan Your Festival + Booking info p76

IMAGE: JOHN PEDEN



Pat Metheny, one of the world's greatest guitarists, is finally back in Aotearoa for a glorious night of jazz repertoire alongside an incredible trio of musicians.

American jazz maestro Pat Metheny's illustrious career spans over four decades, more than 40 full-length recordings, and 20 Grammy Awards. No less than a living legend, his trademark improvisational playing style is the envy of guitarists everywhere and music to the ears of fans globally.

With only one concert in New Zealand previously (in 2006), Metheny is promising a special live performance where anything goes – brand new music, all-time classics and deep cuts from his extensive back catalogue. Metheny's long-time drummer Antonio Sanchez, Malaysian-Australian bassist Linda May Han Oh and British pianist Gwilym Simcock will not only play support but also share the spotlight as tremendous musicians in their own right.

BY SPECIAL ARRANGEMENT WITH LIVE NATION

One of jazz's great stars.

— The Telegraph (UK)

A one-of-a-kind sort of guitarist... [with] jaw-dropping capabilities.

— Los Angeles Times

AN EVENING WITH PAT METHENY

Great Hall, Auckland Town Hall

M	T	W	T	F	S	S
March		5	6	7	8	
9	10	11	12	13	14	15
16	17	18	19	20	21	22
23	24	25	26	27	28	29

Pat Metheny on stage at 8.00PM

A Res
\$139.90

B Res
\$109.90

VIP Hot Seat
\$250

Book at aaf.co.nz
Plan Your Festival + Booking info p76

NEW ZEALAND PREMIERE / AUCKLAND EXCLUSIVE



Impressive...
deeply moving.

— Time Out (Australia)

One of the hottest
tickets of the
[Sydney] festival.

— The Guardian (Australia)



Pull on a bathrobe and share a uniquely immersive and intimate encounter with proud Wiradjuri man Joel Bray, in the hilarious and revelatory **Biladurang**.

BILADURANG

| Joel Bray

Biladurang was first presented at Melbourne Fringe 2018 with support from Melbourne Fringe, CHUNKY MOVE, Arts House, ILBIJERRI and the Wilin Centre.

Joel Bray is black. Well, he's white, but black. Y'know? He's in a hotel room somewhere in Auckland and you, the audience, are invited to share his story.

In this nowhere place Bray takes a pause, looks over his shoulder and takes a good look at his life, asking: "Is this where I am supposed to be? Is this who I am supposed to be? What is all this? The drugs? The sex? The cigarettes?"

Biladurang is loosely based on the traditional story of the platypus. It's a story Bray – a gay, fair-skinned Aboriginal artist – grew up hearing, identifying with this mutant offspring who doesn't seem to belong and finds himself roaming in search of a home. This award-winning confessional solo show is physical, tender, funny and dark. It's the perfect dance-theatre one-night stand.

Also join Joel Bray for the Festival talk **Baby Mutants** (p56), where he and other artists share their experiences of forging new paths and finding their tribe.

AVANI Auckland Metropolis Residences

M	T	W	T	F	S	S
March	11	12	13	14	15	
16	17	18	19	20	21	22
23	24	25	26	27	28	29

WEEK ONE
WED 6.00PM & 8.00PM **PREVIEWS**
THU – SAT 6.00PM & 8.00PM
SUN 5.00PM & 7.00PM

WEEK TWO
WED – SAT 6.00PM & 8.00PM
SUN 5.00PM & 7.00PM

1hr 15mins no interval
Recommended for ages 18+
Contains coarse language, adult themes, drug references, nudity and sexual references

GA / Conc
\$59 / \$54

Book at aaf.co.nz
Plan Your Festival + Booking info p76

VERSES

Black Grace

CHOREOGRAPHY BY NEIL IEREMIA

On tour throughout regional Auckland

M	T	W	T	F	S	S
March	11	12	13	14	15	
16	17	18	19	20	21	22
23	24	25	26	27	28	29

Warkworth Town Hall
WED (18) 7.30PM

Te Oro, Glen Innes
THU (19) 7.30PM

Māngere War Memorial Hall
FRI (20) 7.30PM

Orewa Community Centre
SAT (21) 7.30PM

Artworks Community Theatre, Waiheke Island
SUN (22) 5.00PM

Waiuku Memorial Town Hall
WED (25) 7.30PM

Helensville War Memorial Hall
THU (26) 7.30PM

Zeal West, Henderson
FRI (27) 7.30PM

Barnett Hall, Piha
SAT (28) 7.30PM

The PumpHouse Theatre, Takapuna
SUN (29) 5.00PM

1hr no interval

GA
\$20

Door sales only.
Tickets available at the venue one hour prior to each performance.

Startlingly fresh, full of invention and infectious exuberance.

— The New York Times

One of New Zealand's leading contemporary dance companies, Black Grace brings its long-running, critically-acclaimed **Verses** series to regional Auckland.

To kick off its 25th anniversary year, Black Grace celebrates with its hometown through a 10-centre tour of Tāmaki Makaurau with the next instalment of *Verses*.

Founding Artistic Director Neil Ieremia curates a collection of dance works, inspired by words, lyrics, lines and verse, set to an eclectic mix of his favourite pieces of music to create *Verses*.

Supported by



NGĀ MANU RŌREKA

Taki Rua Productions

NĀ / BY APIRANA TAYLOR

KAIWHAKAMĀORI / TRANSLATOR:
MATEROA HAENGA

Ka auraki mai tētahi tino whakaari i te Kaupeka Reo Māori a Taki Rua Productions.

He mea tito nā te pūkōrero whai-tohu, nā Apirana Taylor (*Ka Tito Au*), he mea whakamāori nā Materoa Haenga, he whakahanumitanga mīharo te kura whakaari nei, a **Ngā Manu Rōreka**, o te reo Māori me te whakaari ā-tinana, e taea ai e ngāi aroha nui ki te reo me te hunga akoako anō te whai wāhi ki te haerenga a ngā kiripuaki matua kia whai hononga ai, kia whai tohutohu anō ai i ō rāua tīpuna.

Arā ētahi ākongā tokorua, e pōkea nei e ngā mahi kura. Ka whakaaweawetia rāua e ō rāua tīpuna kia kimihia he ara anō e whakamīharotia ai ō rāua kaiako me tō rāua hapori: mā te kuhu ki tētahi whakataetae pūkenga waiata. Ka hoki ngā ākongā ki tō rāua marae kāinga, ka huakina tētahi tatau e hoki mai ai ō rāua tīpuna i Hawaiki ki te ao o te nāianeī. Ka arahina rāua e ō rāua tīpuna kia whāia ō rāua pūkenga, otirā, kia tatū i a rāua te whakatau pai katoa i ngā rā o ō rāua ao.

Heoi anō rā, ehara i te mea ko rāua nahenahe ngā kaiwaiata o te rā. Me whai wāhi rawa te whakaminenga ki te waiata motuhake atu e reka pai ai te whakataetae!

A Taki Rua Productions Te Reo Māori Season favourite returns.

From award-winning storyteller Apirana Taylor (*Ka Tito Au*), with translations by Materoa Haenga, the classic **Ngā Manu Rōreka** is a wonderful blend of te reo Māori and physical theatre, in which language-lovers and learners share in the protagonists' journey to regain connection and receive guidance from their ancestors.

Two students, struggling with their school studies, are inspired by their ancestors to find another way to impress their teachers and community: by entering a singing talent competition. When the students return to their home marae, they open a portal for their tīpuna to return from Hawaiki into their modern day lives. Their ancestors guide them to follow their talents and make the best decision of their lives.

However, they aren't the only singers on the day. A special cameo performance by the audience is also required to enrich the competition further!

[An] immersive, fun and an open handed challenge to engage with and appreciate a unique taonga of this land – Te Reo Māori.

— Theatreview (NZ)

IMAGE: SIMON WILSON

Spiegelent, Aotea Square

M	T	W	T	F	S	S
March	11	12	13	14	15	
16	17	18	19	20	21	22
23	24	25	26	27	28	29

SUN 11.00AM & 2.00PM

50mins no interval
Recommended for ages 5+
This performance is undertaken completely in te reo Māori

FREE

Register at aaf.co.nz/ngamanuroreka



IMAGE: RAYMOND SAGAPOLUTELE

He Moko pūna He Tūpuna created by Te Pou Theatre, with children and elders from Te Kura Kaupapa Māori o Te Kotuku and Te Rōpu Kaumatua o Te Whānau o Waipareira (2019).

Auckland-wide

MARCH 2020

A full programme of events, dates and locations will be available early 2020 at aaf.co.nz/whanui and across social media channels:

[facebook.com/Aklfestival](https://www.facebook.com/Aklfestival)

@Aklfestival

@Aklfestival

AucklandFestival

#AKLFEST #WHANUI

FREE

WHĀNUI

He haerenga tōpū, he mātātoa anō a **Whānui**: he kohinga kaupapa toi e whai wāhi atu ai te tangata, otirā, he tūāhua e piri ai, e whai wheako anō ai tētahi kāhui kanorau motuhake e noho nei ki Tāmaki Makaurau ki ētahi mahinga toi e tau ana ki ngā tini tōpito o ō tātou takiwā kāinga.

I te tau 2020, ka ū tonu a Whānui ki te hura i ētahi o ngā kura kōrero me ngā takiwā e motuhake ana ki tō tātou tāone nui.

KI TE TAKE O TE MAUNGA

Ka mahi tahi ngā iwi o ngā takiwā tūtata o Tāmaki me Maungakiekie kia panonihia ai he whaitua tūmatanui. Mā tēnei whakawhitiwhitinga e kitea ai te waihangatanga mai o ētahi mahinga toi nui mārika i ō rātou hapori, ā, ka whakaatuhia ki Onehunga me Mauinaina. He mea whakarite ngātahi ki te Tarahiti Ohaoha o TGTB, he mea ārahi nā te ringatoi, nā Chantel Matthews ko Bobby MacDonald.

HE KURA TOI

He mea whakatōpū i ngā pūkenga taketake o te rangatahi ki ērā o ngā mātanga toi whakaari, he wānanga whakaihiihi hou a *He Kura Toi* e honohono ai ētahi ringa ngaio nō ngā rāngai toi whakaari, toi auaha anō, ki ētahi arero reo Māori i te uru o Tāmaki Makaurau. Ka whai wāhi ētahi taiohi kei ngā Tau 12 me te 13 i te kura ki tētahi hōtaka motuhake ka whakakapitia ki tētahi hui whakanui i ngā tūmanako o te rangatahi mā roto mai i te Whakaari, i te Kori, i te Puoro anō. He mea ārahi nā ngā pūkenga whakaari, nā Ani-Piki Tuari rāua ko Krystal Lee Brown, ā, me tētahi tōpūtanga o ngā pūkenga whakaari taiea o Aotearoa.

He **UTUKORE**, he nui mārika hoki ngā huihuinga whakaū i te ora, he pāhekoheko, hei torotoronga hoki mā te hunga hiakai. Nau Mai Haere Mai – haere mai ka rongō ai i te reka o tētahi o ngā tino wāhi o te Ahurei, o Whānui!

Whānui is a communal adventure: a collection of participatory arts projects in which an amazing mix of people who call Auckland home create, join in with and experience artworks in the many spaces and places that form our neighbourhoods.

In 2020, Whānui continues to bring light to some of the unique stories and landscapes that are distinct to our city.

AT THE FOOT OF THE MAUNGA

The neighbouring suburbs of Tāmaki and Maungakiekie team up to transform public space in an exchange that sees large-scale installations created within their communities displayed in Onehunga and Panmure. In association with TGTB Charitable Trust and led by artists Chantel Matthews and Bobby MacDonald.

HE KURA TOI

Teaming the natural talents of rangatahi with leading performing artists, *He Kura Toi* is an exciting new wānanga which connects professionals from the performing and creative arts industries with te reo Māori speakers in West Auckland. Year 12 & 13 taiohi (youth) will participate in a specialised programme, culminating in a celebration of rangatahi aspiration through acting, movement and music. Led by artists Ani-Piki Tuari and Krystal Lee Brown, and a team of Aotearoa's eminent performers.

FREE and filled with life-affirming, interactive, get-in-amongst-it events. Nau Mai Haere Mai – come and experience Whānui, a Festival favourite!

Supported by



CREATIVE LEARNING FOR STUDENTS & TEACHERS

WITH SUPPORT FROM
SILVER PATRONS JULIE & BRIAN CADZOW

Year levels are
guidelines only

Matinees

BABBLE PAGE 35

Aotearoa New Zealand • Drama

Years 9–13 **THEATRE**



WOLFGANG'S MAGICAL MUSICAL CIRCUS PAGE 16

Australia • Circus, Drama

Relaxed performance – refer to p68

Years 0–6 **CIRCUS**



UPU PAGE 28

Aotearoa New Zealand • Drama, English

Contains strong language and adult themes

Years 11–13 **THEATRE**

NGĀ MANU RŌREKA PAGE 51

Aotearoa New Zealand

Drama, Te Reo Māori

Relaxed performance – refer to p68

Years 3–8 **THEATRE**



BLACK TIES PAGE 14

Australia / Aotearoa New Zealand • Drama

Contains some adult references
and moderate coarse language

Years 11–13 **THEATRE**



MOUTHPIECE PAGE 30

Scotland • Drama

Contains frequent strong language, descriptions
of violence, scenes of a sexual nature, references
to suicide, and haze

Contact schools@aaf.co.nz for more information

Years 12 & 13 **THEATRE**



BLACK LOVER PAGE 34

Aotearoa New Zealand • Drama

Contains some adult references
and moderate coarse language

Years 12–13 **THEATRE**

IMAGES (CLOCKWISE FROM TOP): DYLAN EVANS; LARA CAPPELLI; N/A; JULIE ZHU

Our **Creative Learning** programme gives teachers and their students the opportunity to experience some of the best homegrown and international theatre, music and dance.

With dedicated school matinees and special rates to public shows, the Creative Learning programme will not only enrich curriculum studies but engage and inspire students, Aotearoa's young aspiring artists and future arts audience.

Evenings



SNOW WHITE PAGE 10

France • Dance

Contains partial nudity

Years 9–13 **DANCE**

CIRCOLOMBIA - ACÉLÉRÉ PAGE 12

Colombia • Circus, Dance

Years 7–13 **CIRCUS**



DIMANCHE PAGE 26

Belgium • Drama

Years 7–13 **THEATRE**

LAGRIME DI SAN PIETRO PAGE 36

USA • Music

Years 11–13 **MUSIC**

BARRY MCGOVERN IN WATT PAGE 32

BY SAMUEL BECKETT

Ireland • Drama

Years 11–13 **THEATRE**



COLD BLOOD PAGE 24

Belgium • Drama

Years 8–13 **THEATRE**

BEETHOVEN 250 PAGE 38

Aotearoa New Zealand • Music

Years 7–13 **MUSIC**

Bookings & Enquiries

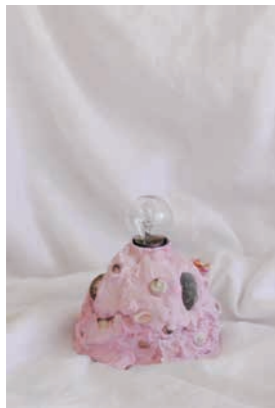
Email: schools@aaf.co.nz

Phone: 09 374 0339

For Creative Learning dates and details, including Programming Resources, visit aaf.co.nz/schools

All tickets \$25 and under

IMAGES (CLOCKWISE FROM TOP): JEAN-CLAUDE CARBONNE; JULIEN LAMBERT; ALICE PIEMME



35°12'28.7" S 174°04'33.4" E

BABY MUTANTS

In his intimate hotel-room show, *Biladurang* (p48), Joel Bray explores the remarkable tension of growing up as a gay Aboriginal boy in a white Pentecostal household and feeling like a 'mutant'. But how do you find (and remain true to) yourself when you don't have an anchor? And how does this change the way we think about family?

Join **Joel Bray**, designer **Kaan Hiini**, artist and FAFSWAG co-founder **Tanu Gago**, performance artist **Moe Laga** and journalist **David Farrier** as they share their own experiences of forging new paths and finding their tribe.

CULTURE VULTURE

"Great artists steal", or so the refrain goes. But is all really fair in love and art? How do we navigate the blurry line between appreciating and appropriating a culture that isn't ours? Should artists have the right to tell stories that don't belong to them? And how do we celebrate now-problematic figures from history?

Debating these questions are actor **Rachel House** (*Hunt for the Wilderpeople*, *Thor: Ragnarok*), Te Tairāwhiti Arts Festival director **Tama Waipara**, writer and director **Todd Karehana** (*The Spectacular Imagination of the Pōhara Brothers*, *Ahikāroa*), Curator Mātauranga Māori at Museum of New Zealand Te Papa Tongarewa **Matariki Williams** and filmmaker/producer **Julie Zhu**.

IMAGES: BAD LAMPS – KARL BAYLY

Each lamp is titled with the co-ordinates (longitude and latitude) from which its materials were gathered. Of the land, for better or for worse.



35°12'28.7" S 174°04'33.4" E



TALKS

A series of talks exploring the big questions, intimate narratives and fresh perspectives at Auckland Arts Festival.

CURATED BY ROSABEL TAN

Spiegelent, Aotea Square

Baby Mutants TALK
TUE 17 MAR 5.30PM – 6.30PM

GA \$20

Culture Vulture TALK
TUE 24 MAR 5.30PM – 6.30PM

GA \$20

Book at aaf.co.nz
Plan Your Festival + Booking info p76

FOLLOWED BY DARK MAGIC

A year on from the Christchurch Terror Attacks and against a global backdrop of increasing division and violence, it feels like there are increasingly higher stakes in the art we create and consume. So where to from here? Tempo Dance Festival director **Cat Ruka**, theatremaker **Ahi Karunaharan** (*Tea, A Fine Balance*, *My Heart Goes Thadak Thadak*), poet **Nida Fiazi** and playwright **Stanley Makuwe** (*The Dead Shall Rise Again*, *Black Lover*) unpack the considerations they make when drawing on their own (and their communities') experiences, the art that has changed their lives, and the very idea of hope.

This talk follows the screening of *The Curry House Kid* and is chaired by comedian **James Roque** (*Boy Mestizo*, *Frickin Dangerous Bro*).

IMAGE: SWAN FILMS & ALL3MEDIA INTERNATIONAL
The Curry House Kid (UK, 2019; directed by Nick Poyntz) is rated exempt. 46mins.

35°12'30.9" S 174°04'31.1" E

THE CURRY HOUSE KID

In this poignant documentary, the curry houses of choreographer **Akram Khan**'s youth inspire a poetic dance work about the immigrant experience in Britain.

When he was 20, Akram Khan – the visionary behind 2018 Festival triumph *Giselle* – ran from his childhood and never looked back. He returns home in *The Curry House Kid* – to his memories of growing up on Brick Lane with his Bangladeshi parents, and to the violence and racism that shaped his everyday life – all of it culminating in a ruminative, hypnotic dance piece in an abandoned warehouse nearby.

★★★★★

[A] brave, beautiful documentary...
The choreography is extraordinary: expressive, dynamic and deeply moving."

– The Guardian (UK)

Academy Cinemas

The Curry House Kid FILM
+ **Dark Magic** TALK
SUN 22 MAR 2.00PM – 4.00PM

Allocated \$20

Book at aaf.co.nz
Plan Your Festival + Booking info p76

ŌTAIRONGO

| Maree Sheehan

EXHIBITION

Pushing at the boundaries of contemporary Māori art, sound artist Maree Sheehan explores a new form of portraiture in **Ōtairongo**. Using only sonic elements as her palette, each portrait captures the wairua and mauri of three mana wāhine Māori – Moana Maniapoto, Te Rita Papesch and Ramon Te Wake.

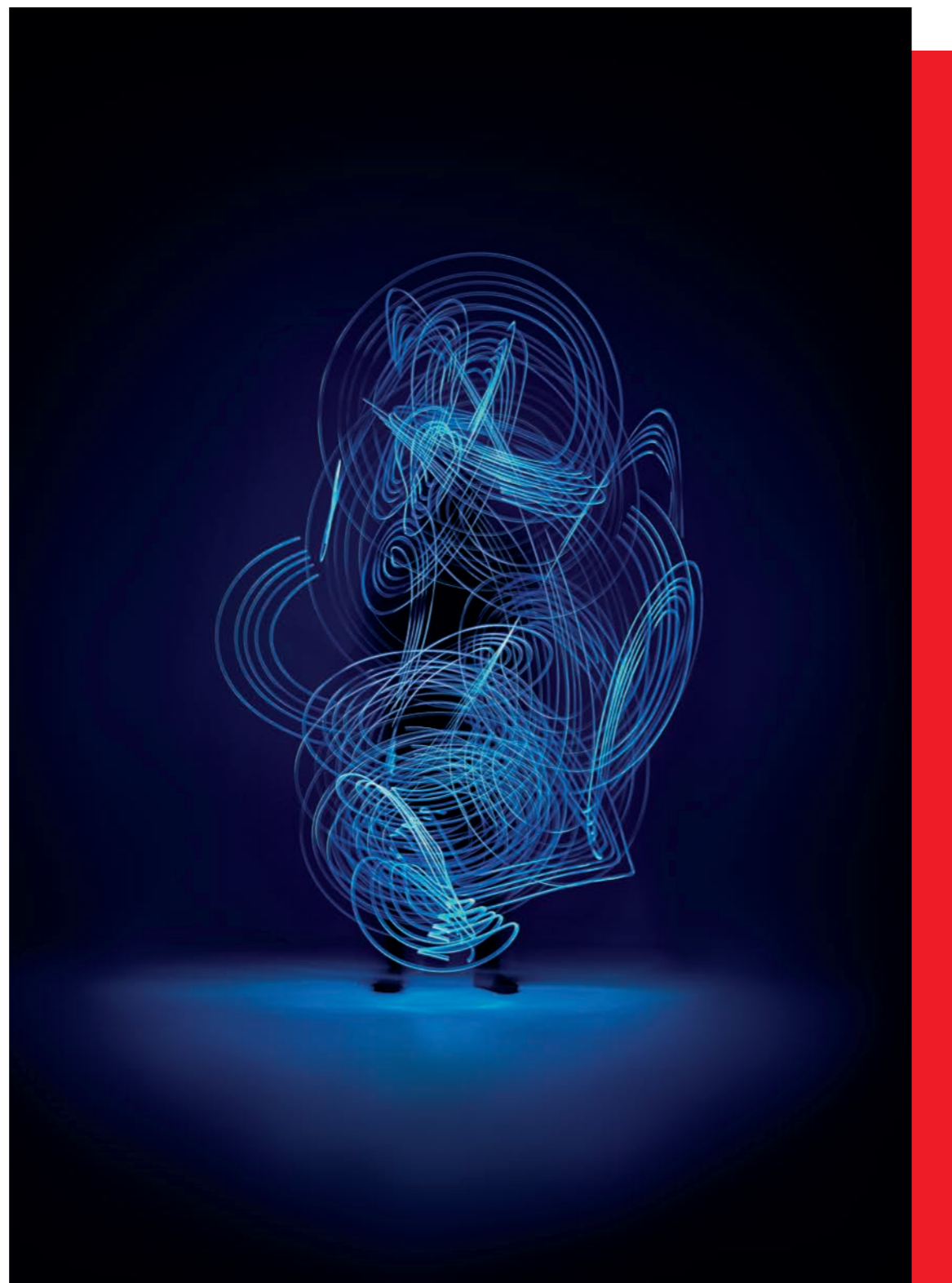
This immersive installation is a world first. Elevating your aural senses, you are invited to put on a pair of headphones and be submerged into an ethereal plane where kōrero, waiata, the marae, whānau, and whenua converge to create a captivating 360° experience.

Artspace Aotearoa

FRI 6 MAR – SAT 16 MAY

T THU 19 MAR 5.30PM
Access & Inclusion info p68

FREE



WORLD PREMIERE

EVENTS

Te Oro o Te Wāhine Māori

Ōtairongo comes to life in this free evening of performance and storytelling with the portraiture subjects themselves – Moana Maniapoto, Ramon Te Wake and Te Rita Papesch – along with the artist, Maree Sheehan.

Artspace Aotearoa
THU 19 MAR 7.00PM – 8.20PM
FREE

Rongo²

Experience *Ōtairongo* in a new light with this special, one-off dining experience. Join chefsarena and Kasey Bird as they serve up their interpretation of and response to *Ōtairongo* in this four-course meal with matched wines.

Artspace Aotearoa
THU 26 MAR 7.00PM
Limited spaces available
Tickets on sale from December
Visit aaf.co.nz/otairongo for more info

The Unseen

Chaired by Nigel Borell (Curator Māori Art, Auckland Art Gallery Toi o Tāmaki), join pioneering artists Lisa Reihana and Maree Sheehan as they discuss the vital role that sound plays in their practice and the unique and politically radical considerations that underpin their work.

Artspace Aotearoa
SAT 18 APR 10.00AM – 11.00AM
FREE

Demonstration: Binaural and Immersive Sound Experiences

Presented in collaboration with Protel and Sennheiser, this workshop invites creative practitioners to witness the latest technology in binaural and immersive soundscapes – and to explore sonic experience creation as a potential avenue for future projects. Hosted in the state-of-the-art Dolby Atmos theatre at Department of Post.

Department of Post
THU 30 APR 6.30PM – 7.30PM
FREE

TRANSMISSION

| Kereama Taepa

KEREAMA TAEPA, UNTITLED, 2019

Transmission is a major exhibition by award-winning, multidisciplinary artist Kereama Taepa that will realise one of his most ambitious commissions to date. Taepa's practice demonstrates the long tradition of innovation within te ao Māori. His use of virtual reality and 3D printing has infused whakairo (carving) with new modes of address, interaction and portability that extends from the gallery walls to everyday dress.

Transmission explores the infinite possibilities of digital technologies to transmit mātauranga Māori. Taepa considers digital technologies beyond their immediate application, locating them within Māori paradigms that simultaneously connect to origin stories and offers space to embed personal narratives as a way forward into the future.

Kereama says, "Looking into the future, my major concern is how we may identify our kinship to these digital and virtual phenomena so that these technologies are not merely being used, but rather they are contextualised within te ao Māori itself."

Visit aaf.co.nz/transmission for information about special events that coincide with *Transmission*, including a music performance in response to the exhibition on FRI 20 MAR.



Objectspace

THU 12 MAR – SUN 3 MAY

FREE

SAFE AS HOUSES

Craig Horne
Ana Lakusa
Metiria Turei



CRAIG HORNE

Safe as Houses is a site-specific group exhibition curated for and about Ōtauhu, South Auckland. The artists include local photographer Craig Horne, West Auckland-based painter Ana Lakusa, and Dunedin-based former politician turned textile installation artist Metiria Turei. The exhibition unpacks ideas related to historical architecture and landmarks, the whare tangata and body as home, and gentrification as represented in collective culture and identity.

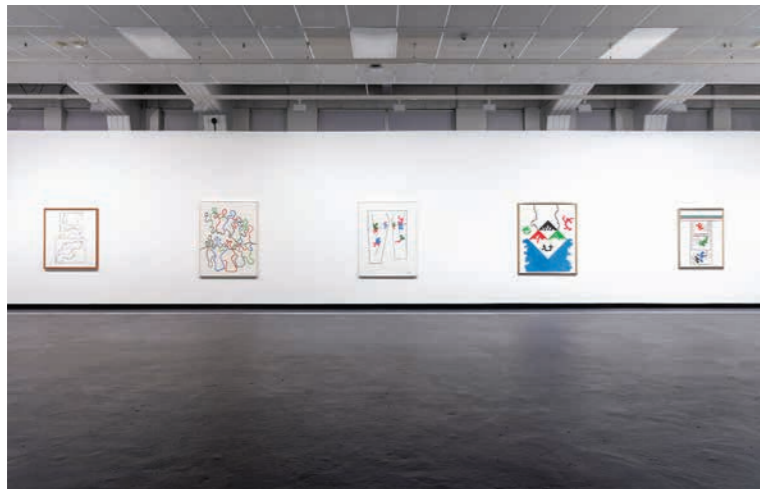
Vunilagi Vou is a South Auckland-based gallery that centralises contemporary Pacific art and South Auckland audiences.

Vunilagi Vou

TUE 3 MAR – SAT 4 APR

FREE

Safe as Houses has been produced with support from Mangere-Ōtauhu Local Board.



SPLIT LEVEL VIEW FINDER: THEO SCHOON AND NEW ZEALAND ART

Connecting Bauhaus modernism, Māori art and the art of the mentally unwell, Theo Schoon (1915–85) remains a controversial figure in New Zealand art. His work was constantly in dialogue or dispute with other cultures and other artists.

The first comprehensive Schoon exhibition in decades, **Split Level View Finder** presents his painting, graphics, photography, and jade and gourd carving, in conversation with works by contemporaries Rita Angus, Len Castle, A.R.D. Fairburn, Rolfe Hattaway, Dennis Knight Turner, Douglas MacDiarmid, Paratene Matchitt, Selwyn Muru, Arnold Wilson and Ans Westra, rethinking Schoon's legacy for 21st-century Aotearoa.

Split Level View Finder is curated by Dr Damian Skinner and Aaron Lister. The exhibition is supported by the City Gallery Foundation, Auckland Art Gallery Toi o Tāmaki, the Schoon Estate, and the Fletcher Trust Collection. It is developed and toured by City Gallery Wellington. Skinner's book *Theo Schoon: A Biography* was published in 2018.

IMAGES: *SPLIT LEVEL VIEW FINDER: THEO SCHOON AND NEW ZEALAND ART*, CITY GALLERY WELLINGTON, 2019.

Talking with Theo

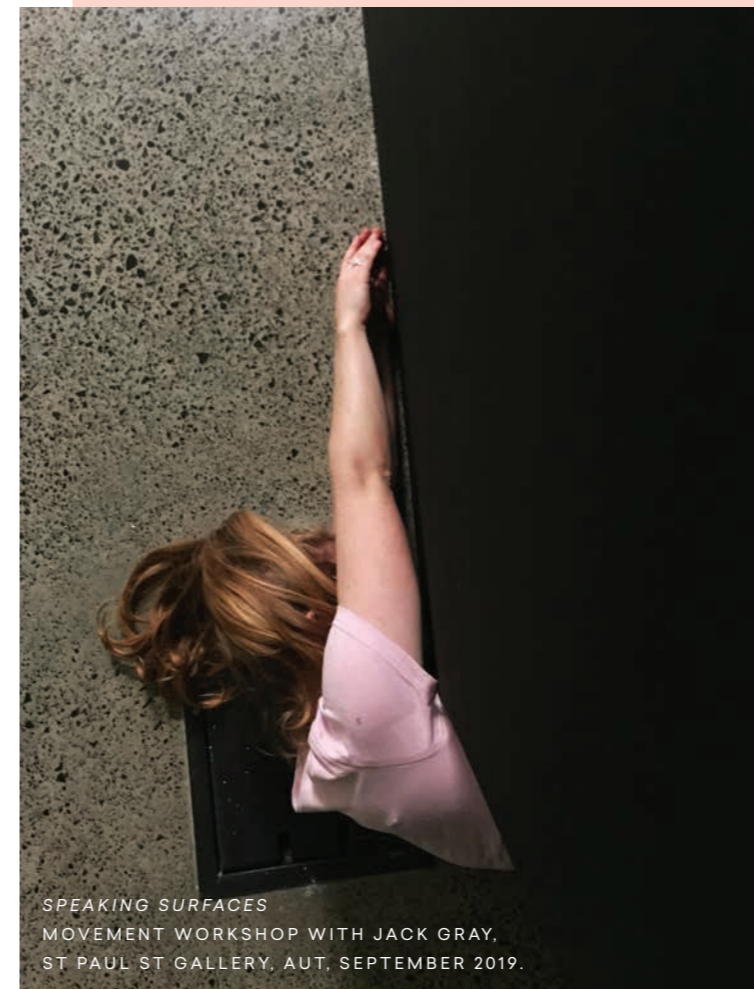
A day of talks and conversations in response to the exhibition *Split Level View Finder*, led by Hamish Coney. All talks are free. No bookings necessary.

SUN 8 MAR 11.00AM – 4.00PM **FREE**

Te Uru Waitākere Contemporary Gallery

SAT 7 MAR – SUN 31 MAY

FREE



SPEAKING SURFACES
MOVEMENT WORKSHOP WITH JACK GRAY,
ST PAUL ST GALLERY, AUT, SEPTEMBER 2019.

SPEAKING SURFACES

Speaking Surfaces asks how do surfaces speak? How are stories and experiences inscribed in the surfaces that surround us? A collaboration between ST PAUL St Gallery and AUT Spatial Design, *Speaking Surfaces* is a dynamic and welcoming space that serves as a platform for encounters through exhibitions, conversations, performances, gatherings, screenings, and teaching – including a **Creative Wānanga**, developed especially for Auckland Arts Festival.

CREATIVE WĀNANGA

Jack Gray &
Atamira Dance Company

Over one weekend during Auckland Arts Festival, ST PAUL St Gallery activates space in response to the kaupapa of *Speaking Surfaces*. Facilitated by Atamira artistic director Jack Gray and special guests, this creative wānanga invites the public to discuss, share and participate in a tactile, multi-sensory series of events situated both in the gallery and outside. We take you on a surprising journey – walking/buses/trains/cars – to unpack, map and explore our collective experience, and the terrain, of Tāmaki Makaurau.

ST PAUL St Gallery

FRI 21 FEB – SAT 16 MAY

Creative Wānanga
SAT 21 & SUN 22 MAR

10.00AM – 12.00PM **LAB (GALLERY)**
1.00PM – 3.00PM **EXPLORE**
(BUS/TRAIN/WALK/CAR)
4.00PM – 5.00PM **JAM (GALLERY)**

Participants need to register at sgallery@aut.ac.nz. You can sign up for any session, on one, or both days.

FREE

HONESTLY SPEAKING: THE WORD, THE BODY AND THE INTERNET



Shahryar Nashat
Sriwhana Spong
Frances Stark
Martine Syms

SHAHRYAR NASHAT *START TO BEG*, 2019.
SYNTHETIC POLYMER, ATOMIZED
ACRYLIC, AND FIBERGLASS.
COURTESY OF DAVID KORDANSKY
GALLERY, LOS ANGELES.

SRIWHANA SPONG *CASTLE-CRYSTAL* (STILL) 2019.
16MM FILM TRANSFERRED TO HD VIDEO. CO-COMMISSIONED BY
AUCKLAND ART GALLERY TOI O TĀMAKI AND EDINBURGH ART FESTIVAL.



This exhibition explores the body and language in art today through four highly immersive presentations by leading international artists. In a cultural era dominated by images, these artists emphasise the relationship between objects, bodies and language. They re-engage ideas of gender politics that were first seen in the 1980s, igniting questions about power and personal truth in the digital age. These ideas are especially relevant now, as political truths are called into question and the expansion of technology outpaces our understanding of its effect on our lives.

Honestly Speaking: The Word, the Body and the Internet includes new and recent work by Shahryar Nashat (Switzerland), Frances Stark (USA) and Martine Syms (USA), and a work by UK-based New Zealand artist Sriwhana Spong which was co-commissioned for the Edinburgh Art Festival in 2019.

Auckland Art Gallery
Toi o Tāmaki

SAT 22 FEB – SUN 7 JUN

FREE*

*Gallery admission charges apply for international visitors.

QUEER ALGORITHMS



Algorithms are problem-solving operations. They are a set of rules that help us calculate, decode and define. But what happens when these set of rules are 'queered'? Gus Fisher Gallery presents a timely and relevant show, tapping into pressing issues facing local and global queer communities.

This exhibition brings together a plurality of voices where identities are understood as always multifarious and in flux. Assuming a polyvocal and intersectional standpoint, **Queer Algorithms** features artists whose artworks have and are in the process of reconfiguring new algorithms for change against continued systems of exclusion.

Gus Fisher Gallery is proud to be working with the New Zealand AIDS Foundation and Ending HIV on the presentation of a selection of individual panels from the National Aids Memorial Quilt as part of the exhibition. *Queer Algorithms* includes artworks by ground-breaking artists never seen before in Aotearoa working in the mediums of video, installation and internet art.

A VIRUS WALKS INTO A BAR, 2018
(FILM STILL) BY JOHN WALTER,
PART OF 'CAPSID', CO-COMMISSIONED
BY SOUTHWARK PARK GALLERIES
LONDON AND HOME MANCHESTER –
SUPPORTED BY A LARGE ARTS AWARD
FROM WELLCOME AND ARTS COUNCIL
ENGLAND GRANTS FOR THE ARTS.
IMAGE COURTESY OF THE ARTIST.

Gus Fisher Gallery

SAT 15 FEB – SAT 2 MAY

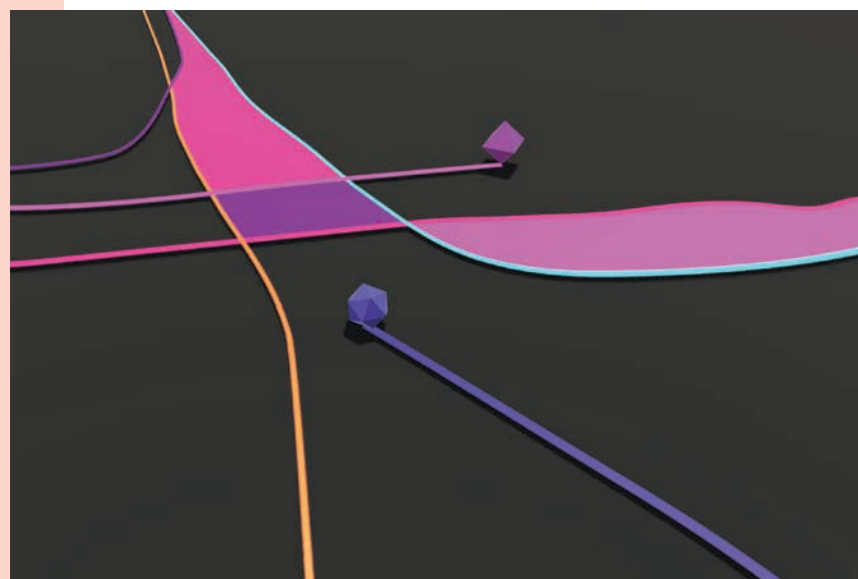
NZSL videos about the exhibition
available through the gallery

FREE

I EXTEND MY ARMS

Shannon Novak & Jeff Nusz

PRESENTED BY AUCKLAND LIVE



Aotea Square is a living organism. Human activity flows around it and through its veins – cars driving to the movie theatre, the criss-crossing of walking paths at the traffic intersection, arm gestures as a story is told. **I Extend My Arms**, rendered live on the larger-than-life Auckland Live Digital Stage screen in Aotea Square, makes this ever-changing life-force visible. People are transformed into geometric avatars that move along the ground – a cube, a sphere, a pyramid. They leave behind coloured walking trails that slowly dissipate over time. This builds an abstract image of everyday life in the area and how its inhabitants change the collective energy of the space over time.

This title of this project takes its cue from artist Claude Cahun's photograph of the same name (1930). In this photo, a large stone monolith has human arms reaching out – a seemingly inanimate object (like Aotea Square), animated.



Digital Stage, Aotea Square

WED 11 MAR – SUN 29 MAR

Daily. For a detailed schedule, visit aaf.co.nz/iextendmyarms

FREE



ENVIRONNEMENT CHROMOINTERFÉRENT, 1974/2012. EXHIBITION "CRUZ-DIEZ. COLOR IN SPACE", JEONBUK PROVINCE ART MUSEUM, JEONBUK, SOUTH KOREA, 2012
© CARLOS CRUZ-DIEZ/ADAGP. COPYRIGHT AGENCY, 2019.

CHROMOINTERFERENCE

Venezuelan-French artist Carlos Cruz-Diez (1923–2019) was a major protagonist in the field of kinetic and optical art. His body of work explores how the movement of our bodies, objects and light determines our perception of colour. For him, colour was an evolving experience in space and time, and by means of various technologies he produced ingenious devices of perception. If looking at a painting is comparable to gazing out of a window, his works propose a leap into a void made of mutating colour.

For the first time in New Zealand, Te Tuhi and Auckland Live present the artist's magnificent **Chromointerference** (1960–2019), where colour is made of projected moving patterns and light creating spellbinding 'events' in a monumental scale.

This epic visual extravaganza will be projected onto the exterior surface of the Aotea Centre for the duration of the Festival.

Carlos Cruz-Diez

PRESENTED BY
TE TUHI & AUCKLAND LIVE

Aotea Centre Wrap, Aotea Square

WED 11 MAR – SUN 29 MAR

Daily, from sunset to 11.00PM

FREE

ACCESS & INCLUSION

We're committed to making the Festival accessible for all audiences. The following icons in this guide and on aaf.co.nz indicate the accessibility of events in our programme.

ACCESS TICKETS

Tickets are \$20 and under for access patrons for events in the Access programme. One companion ticket per access patron is available at the same price each for all events in the Access programme. Some events have limited capacity so book early to avoid disappointment.

WHEELCHAIR ACCESS BOOKINGS

These bookings should be made directly with the venue or via Ticketmaster.

Please download our **Festival Social Story** for information on accessible parking.

Wheelchair accessible seats for the events listed in the Access programme are \$20 each, plus a companion ticket for \$20. Limited capacity, so book early to avoid disappointment.

Limited wheelchair seats are available for performances outside the Access programme at usual ticket prices.

Access Booking & Contact

To book **access tickets only** or for Access programme queries, contact Alex Lodge:

Email: access@aaf.co.nz

Website: aaf.co.nz/access

Phone: 09 374 0320

Text: 0210 804 3142

NZ Relay Service: nzrelay.co.nz

Supported by



WITH SUPPORT FROM
PLATINUM PATRONS ANDREW & JENNY SMITH
GOLD PATRON FRIEDLANDER FOUNDATION
MOJO COFFEE

Blind & Low Vision Events

BLACK TIES PAGE 14

Waitākere Room, Aotea Centre
Saturday 14 March 2.30pm



Audio described performance & touch tour

\$20 **THEATRE**

KA PŌ, KA WAIATA PAGE 22

Concert Chamber, Auckland Town Hall
Wednesday 18 March 6.00pm

Performance notes ahead of time
for Blind & Low Vision audiences

\$20 **MUSIC**

Deaf & Hard of Hearing Events

BABBLE PAGE 35

Māngere Arts Centre
Friday 27 March 7.00pm



NZSL interpreted performance

\$20 **THEATRE**

Massive Foundations Taster Workshop
with Massive Company artistic director Sam Scott, MNZM

Ōtara Music Arts Centre, Main Hall
Wednesday 1 April 4.30–7.30pm

NZSL interpreted workshop for ages 14–24

FREE – visit aaf.co.nz/babbledeaf for booking info

Relaxed Performances

WOLFGANG'S MAGICAL MUSICAL CIRCUS PAGE 16

Bruce Mason Centre
Friday 20 March 10.30am



Relaxed performance

\$10 **FAMILY** **CIRCUS**

Relaxed performances are for anyone who would benefit from a more relaxed environment. This can include people with autism, sensory sensitivities, or a learning difficulty.

SOCIAL STORIES FOR THE FESTIVAL ARE
AVAILABLE TO DOWNLOAD FROM Aaf.co.nz

SNOW WHITE PAGE 10

Kiri Te Kanawa Theatre, Aotea Centre
Sunday 15 March 5.00pm



Audio described performance & touch tour

\$20 **DANCE**

TIRA PAGE 20

Aotea Square • Wednesday 11 March 6.00pm



Braille song sheets available;
designated access area for
audience who may require it

FREE **MUSIC**

LIMBO UNHINGED PAGE 8

Spiegel Tent, Aotea Square
Wednesday 18 March 7.00pm



NZSL interpreted performance

\$20 **CIRCUS** **CABARET**

SNOW WHITE PAGE 10

Kiri Te Kanawa Theatre, Aotea Centre
Thursday 12 March 7.00pm



NZSL video about the show; very visual show

\$20 **DANCE**

APO OPEN REHEARSAL BEETHOVEN SYMPHONY PAGE 38

Great Hall, Auckland Town Hall
Date & time TBC



– visit aaf.co.nz/access for updates

Relaxed open rehearsal; listening devices
available for hyperaudio sensitive audiences

FREE **MUSIC**

T TOUCH TOUR

6g NZSL INTERPRETED
PERFORMANCE

6 dots BRAILLE
AVAILABLE

W WHEELCHAIR ACCESSIBLE
– see back page for accessible venues

AD AUDIO DESCRIBED
PERFORMANCE

eye VERY VISUAL SHOW

R RELAXED
PERFORMANCE

ear HEARING LOOP
– see back page for accessible venues

BARRY MCGOVERN IN WATT PAGE 32 BY SAMUEL BECKETT

ASB Waterfront Theatre • Sunday 29 March 4.00pm

Speech-based performance; performance notes
ahead of time for Blind & Low Vision audiences

\$20 **THEATRE**

ŌTAIRONGO PAGE 58

Artspace • Thursday 19 March 5.30pm



Sonic art exhibition;
touch tour & artist talk

FREE **VISUAL ARTS**

PLACE DES ANGES PAGE 4

Upper Field, Auckland Domain
Access tickets available for all performances



NZSL video about the show; very visual show

\$20 **SPECIAL EVENT**

QUEER ALGORITHMS PAGE 65

Gus Fisher Gallery
Saturday 15 February – Saturday 2 May



NZSL videos about the exhibition
available through the gallery; very visual show

FREE **VISUAL ARTS**

NGĀ MANU RŌREKA PAGE 51

BLENNZ Homai Campus

Date & time TBC

– visit aaf.co.nz/access for updates



Relaxed performance for schools

\$5 **FAMILY** **THEATRE**

CORE FUNDERS



GOLD SPONSORS



SILVER SPONSORS



BRONZE SPONSORS



CORPORATE PATRONS



MAJOR FUNDERS



FUNDING PARTNERS



INTERNATIONAL PARTNERS



PLATINUM PATRONS

Sir Roderick & Gillian, Lady Deane
Kent & Gaye Gardner
Janet Clarke & John Judge
Andrew & Jenny Smith
Sir James Wallace
(The Wallace Foundation)

SILVER PATRONS

Bill & Frances Bell
Julie & Brian Cadzow
Jeremy Collins & L Thompson
Christine & Richard Didsbury
Trevor & Jan Farmer
Dame Jenny Gibbs
John & Jo Gow
Rochelle McLaren
Sir Chris & Dayle, Lady Mace
Sonbol & Farzod Taefi
Walker & Hall Trust
Fran Wyborn

BRONZE PATRONS

John Barnett
John Billington QC
Rick & Jenny Carlyon
Mick & Jane Carolan
Rosslyn Caughey
Mark & Angela Clatworthy
Sally Clatworthy
Graham Cleary
Sally & David Inns
Nicola Johnson & Stephen Mills QC
Ian & Wendy Kuperus
Kate Plaw
Geoff & Fran Ricketts
Michelle & Will Rouse
Lady Philippa Tait
Fred & Nicky Ward

JADE PATRONS

Jenny Anderson
John & Victoria Carter
Amber Coulter & Andrew Lewis
Toss Grumley
Tarun Kanji
Vanessa Morgan
Shona Roberts
Chris Simcock & Camilla Hope-Simcock
Martin & Catherine Spencer

GOLD PATRON

Friedlander Foundation

Ford



Driving Performance behind Auckland Arts Festival 2020

AUCKLAND March 17-29 2020
ARTS FESTIVAL
TE AHURE TOKI O TAMAKAU MAKAUARAU



Metro

Colourfully Auckland

The Colour Run.
Photographed exclusively for
Metro magazine by Petra Leary.
Winner of Best Photographer,
Magazine Publishing Awards 2019.

metromag.co.nz



COFFEE. ART. SLEEP. REPEAT.

Official coffee of Auckland Arts Festival

14 Auckland
CBD Locations

58 Gaunt St
188 Quay St
167 Victoria St
10 Symonds St
66 Wyndham St
35A Vulcan Lane
6 Durham St East

191 Queen St
95A Queen St
Queens Arcade
205-209 Queen St
Auckland Art Gallery
24 Wellesley St West
20 Viaduct Harbour Ave

10% off drinks every time with the Mojo App.

mojo.coffee

PHANTOM BILLSTICKERS

FLORA FOR THE CONCRETE JUNGLE
0800PHANTOM.CO.NZ



YOUR HOME
FOR AUCKLAND ARTS FESTIVAL 2020

EXPLORE

We are a short walk from the Spiegeltent and central to Auckland's arts, shopping, & entertainment scene

EAT & DRINK

Get 15% off with a minimum purchase of 2 Best Brews™ at Queen's Head Bar & Eatery or the Churchill, open til late

RELAX

Enjoy our signature Four Points by Sheraton beds and energising breakfast everyday as our guest

Four Points by Sheraton Auckland • 396 Queen Street • fourpointsauckland.com

CITIZEN Q

TWO COURSE MEAL DEALS FROM \$35 PP



100% of the profits generated from our kitchen and bar goes toward supporting what happens on the stages at Q Theatre.

Q Theatre | 305 Queens Street | qtheatre.co.nz



Atrium Carpark

130 Albert Street, Auckland 1010



\$5

NIGHT RATE

Entry after 5pm
Exit by 6am

Book online and use the promo code **ARTS20**
Go to our website and follow the instructions.



[www.atriumcarpark.co.nz](http://www atriumcarpark.co.nz)

Proud supporters of Auckland Arts Festival

**MATTERS OF
FACT AND
TIMEOUT.**



**SOMETHING FOR EVERY TASTE
IN NEW ZEALAND'S HERALD.**



Your Entertainment

nzherald.co.nz/entertainment


BOOKING INFORMATION

AAF.CO.NZ

Tickets on sale*
WED 6 NOV 9.00AM

Early Bird** tickets end
MON 9 DEC 11.59PM

**Book Multiple Shows &
Save on Booking Fees**

Visit aaf.co.nz, select the show/s you wish to attend by clicking the ADD TO CART button  on the relevant event pages. When you are ready to purchase tickets, go to your cart and follow the prompts.

NOTE: Tickets are subject to availability and booking fees and credit card charges apply. For Terms & Conditions and more information, see aaf.co.nz

BOOK ONLINE

Ticketmaster

all events*

ticketmaster.co.nz

Shopping Cart

all events*

aaf.co.nz Book online, save on booking fees

ASB Waterfront Theatre

Events at ASB Waterfront Theatre only

asbwaterfronttheatre.co.nz

Q Theatre

Events at Q Theatre only

qtheatre.co.nz

*Tickets for **Verses** are only available as door sales at each venue on the day of performance

BOOK IN PERSON

Aotea Centre

Ph Ticketmaster 09 951 2501

Box Office 50 Mayoral Drive

AAF Aotea Square Ticket Booth

Box Office Aotea Square (from 11 March 2020)

ASB Waterfront Theatre

Ph 0800 282 849

Box Office 138 Halsey Street

Q Theatre

Ph 09 309 9771

Box Office 305 Queen Street

For Box Office opening hours, visit aaf.co.nz/bookinginfo

**Available until midnight MON 9 DEC 2019, or until allocation sold out. Ticket limits may apply.

Pay What You Can

In 2020 we're throwing open the doors to community groups and organisations who want to give the arts a go, even if they've not otherwise felt it possible, for personal or financial reasons. **Pay What You Can** means, for selected shows, attendees can pay what's available to them. We will be talking to selected community groups and organisations about bringing their networks to the Festival via Pay What You Can.

If you'd like to recommend an organisation or community for this programme, please email access@aaf.co.nz

TERMS & CONDITIONS

Important Information

Auckland Arts Festival shows are ticketed through official ticketing agencies – **Ticketmaster, ASB Waterfront Theatre and Q Theatre**. To ensure you are purchasing genuine tickets, we recommend purchasing via the Buy Now or Shopping Cart links on our website » aaf.co.nz

Tickets may be sold by a variety of ticketing agents, each with differing booking or service fees and processing charges. Prices for events listed in this brochure are exclusive of these charges. Where tickets are booked in person, by phone or online, an additional cost will be incurred and will vary from a per-transaction charge to a per-ticket charge depending on which agent is selling the ticket. Recommendation: if you are booking more than one show use the Shopping Cart at aaf.co.nz. Online bookings generally incur the lowest charges when buying more than two tickets.

Information in this programme is correct at the time of printing. The Festival reserves the right to alter, without notice, any events, programmes and artists.

Ticket prices include GST. All sales are final and there are NO refunds or exchanges, except as required by law.

All ticket purchases are subject to availability and the best available seats (in each price category) at the time of purchase.

Latecomers may be excluded from a show or admitted only at a suitable point in the performance. Latecomers will not be entitled to a transfer or a refund.

Some seats (other than Premium and A Reserve) may have sightline/sound restrictions. Please check when booking.

Special Offers

EARLY BIRD¹ An Early Bird discount price is available for most shows on selected reserve categories from Wednesday 6 November 9.00am to Monday 9 December 11.59pm or until allocations are exhausted. Early Bird tickets are no longer available for *Snow White* or *Amanda Palmer – There Will Be No Intermission*. Early Bird tickets are not available for *AAF Talks*, *The Curry House Kid*, *Biladurang*, *UPU*, *Aldous Harding* / *Weyes Blood* / *Purple Pilgrims* and *An Evening with Pat Metheny*. Early Bird tickets to *Place des Anges* available until midnight Monday 13 January. Early Bird tickets to *Black Lover* available until midnight Thursday 13 February. All Early Bird shows can be found at aaf.co.nz/earlybird

SPECIAL OFFERS¹ The Festival may run special offers for selected shows. Offers are communicated on the website aaf.co.nz/specialoffers, and via Twitter @Aklfestival and Facebook facebook.com/Aklfestival

¹Booking fees apply to all special offers.

Seating, Concessions, Families & Groups

GENERAL ADMISSION (GA)² For all shows with GA tickets, we recommend you arrive early to ensure the best choice of seat/position. PREMIUM GA tickets to *Limbo Unhinged* allow priority entry and access to the best seats closest to the stage. Further information can be found on our Terms & Conditions page aaf.co.nz/tc

CONCESSION (CONC)² Seniors aged 65+ with SuperGold card, tertiary students with valid ID, and Community Services card holders. Concession conditions for *Beethoven 250* and *Black Lover* differ. Please check the website before booking.

CHILD² 14 years and under. Please note: only selected shows have child prices. Where there is no child price, concession prices apply.

FAMILY PASS²: A Family Pass, where applicable, includes two adults and two children (14 & under) OR one adult and three children (14 & under).

UNDER30² Discounted tickets are available for selected shows for people aged under 30 years. These tickets may be limited to specified seat categories and the number of tickets available are strictly limited. Under30 tickets for *Limbo Unhinged* are only available for performances 12–18 March and are subject to availability. By purchasing an Under30 ticket you are stating that you are aged under 30 years. Photo ID/proof of age will be required to gain entry to the performance/show.

GROUPS² Groups of 6+ qualify for concession prices and can be booked through the usual channels. Groups of 10+ may book on Ticketmaster's Group Booking line 09 970 9745 or email groups@ticketmaster.co.nz. For Q Theatre and ASB Waterfront shows contact the venues directly. Booths in the Spiegeltent seat a maximum of 9 people and can only be booked as a group of 9.

SCHOOLS² For information about bringing a school group to a Festival show, see p54 and/or visit aaf.co.nz/schools. Please email schools@aaf.co.nz to enquire about or book school group shows.

STUDENT RUSH² Full-time students (with valid ID) can purchase Student Rush tickets to selected shows at 50% of regular ADULT prices only on the day of the performance from the venue box office (subject to availability).

ACCESSIBLE SEATING² If you have wheelchair, hearing loop, or other seating requirements, please call Q Theatre (09 309 9771) or ASB Waterfront Theatre (0800 282 849) directly, or Ticketmaster (09 951 2501) for all other venues.

²Booking fees apply.

Access & Inclusion Programme

TO BOOK for audio described, relaxed or NZSLI performances, and touch tours, and to request introductory notes:

Email access@aaf.co.nz
Ph 09 374 0310, MON–FRI 9.30AM–5.00PM • Text: 0210 804 3142
This in-house booking service is for **access tickets only**.

For more information about our Access & Inclusion programme, see p68–69 or visit aaf.co.nz/access

FESTIVAL CALENDAR

March 2020
Book at aaf.co.nz

Access performances
See p68 for info on Access & Inclusion events.

Black Lover performances begin 6 MAR. See p34.
UPU performances begin 5 MAR. See p28.

Black Lover continues until 4 APR. See atc.co.nz.
Ōtairongo events continue until 30 APR. See p59.

Special Event

Circus / Cabaret / Dance

Family

Music

Theatre

Talks / Visual Arts

Event	Venue	Page	TUE 10	WED 11	THU 12	FRI 13	SAT 14	SUN 15	MON 16	TUE 17	WED 18	THU 19	FRI 20	SAT 21	SUN 22	MON 23	TUE 24	WED 25	THU 26	FRI 27	SAT 28	SUN 29
Place des Anges	Upper Field, Auckland Domain	4				8.30PM	8.30PM	8.30PM														
Biladurang	AVANI Auckland Metropolis Residences	48		6.00PM & 8.00PM	6.00PM & 8.00PM	6.00PM & 8.00PM	6.00PM & 8.00PM	5.00PM & 7.00PM			6.00PM & 8.00PM	6.00PM & 8.00PM	6.00PM & 8.00PM	6.00PM & 8.00PM	5.00PM & 7.00PM							
Circolombia – Acélééré	Kiri Te Kanawa Theatre, Aotea Centre	12																	7.00PM	7.00PM	7.00PM	4.00PM
Limbo Unhinged	Spiegelent, Aotea Square	8			8.00PM	7.00PM	7.00PM	6.00PM		7.30PM	7.00PM	6.30PM	7.00PM & 9.30PM	7.00PM & 9.30PM	6.00PM		7.30PM	6.30PM	6.30PM	7.00PM & 9.30PM	7.00PM & 9.30PM	6.00PM
Snow White	Kiri Te Kanawa Theatre, Aotea Centre	10		7.00PM	7.00PM	8.00PM	8.00PM	5.00PM														
Verses	On tour throughout regional Auckland	50									7.30PM	7.30PM	7.30PM	7.30PM	5.00PM			7.30PM	7.30PM	7.30PM	7.30PM	5.00PM
Ngā Manu Rōreka	Spiegelent, Aotea Square	51													11.00AM & 2.00PM							
Wolfgang's Magical Musical Circus	Bruce Mason Centre	16											10.30AM	10.30AM & 12.30PM	10.30AM & 12.30PM							
@Peace and the Plutonian Noise Symphony	Spiegelent, Aotea Square	45																				9.30PM
Aldous Harding • Weyes Blood • Purple Pilgrims	Great Hall, Auckland Town Hall	44					7.30PM															
Amanda Palmer – There Will Be No Intermission	Hollywood Avondale	40			7.00PM	7.00PM																
An Evening with Pat Metheny	Great Hall, Auckland Town Hall	47	8.00PM																			
Beethoven 250 – Concerts	Great Hall, Auckland Town Hall	38												The Classicist 7.30PM			The Romantic 7.30PM		The Revolutionary 7.30PM			The Radical 5.00PM
Beethoven 250 – Beethoven's Big Birthday Bash	Great Hall, Auckland Town Hall	39						2.30PM														
Beethoven 250 – Ludwig Reflected	Concert Chamber, Auckland Town Hall	39														6.00PM		6.00PM		6.00PM		
Clarion: Music by Eve de Castro-Robinson	Spiegelent, Aotea Square	43							7.00PM													
Eight Songs for a Mad King	Ellen Melville Centre	42		8.30PM		8.30PM	8.30PM		8.30PM	8.30PM		8.30PM										
Estère – Into the Belly of Capricorn	Spiegelent, Aotea Square	41																				
Ka Pō, Ka Waiata	Concert Chamber, Auckland Town Hall	22									6.00PM & 8.00PM											
Lagime di San Pietro	Great Hall, Auckland Town Hall	36				7.30PM																
Soweto Gospel Choir: Freedom	Kiri Te Kanawa Theatre, Aotea Centre	46									8.00PM											
TIRA	Aotea Square	20		6.00PM																		
Babble	Māngere Arts Centre	35									7.00PM	7.00PM	7.00PM	2.00PM & 7.00PM						7.00PM	7.00PM	
Black Lover	Loft, Q Theatre	34	7.00PM	7.00PM	7.00PM	7.00PM	7.00PM	4.00PM		7.00PM	7.00PM	7.00PM	7.00PM	7.00PM	4.00PM		7.00PM	7.00PM	7.00PM	7.00PM	2.00PM & 7.00PM	4.00PM
Black Ties	Waitākere Room, Aotea Centre	14		7.30PM	7.30PM	7.30PM	2.30PM & 7.30PM	6.00PM														
Cold Blood	ASB Waterfront Theatre	24		8.00PM	8.00PM	8.00PM	8.00PM															
Dimanche	ASB Waterfront Theatre	26									8.00PM	8.00PM	8.00PM	8.00PM	4.00PM							
Mouthpiece	Rangatira, Q Theatre	30										7.30PM	7.30PM	7.30PM	2.00PM	7.30PM		7.30PM	7.30PM	7.30PM	3.00PM & 7.30PM	
UPU	Rangatira, Q Theatre	28	7.30PM	7.30PM	7.30PM	7.30PM	5.00PM & 8.00PM	5.00PM & 8.00PM														
Barry McGovern in Watt by Samuel Beckett	ASB Waterfront Theatre	32																8.00PM	8.00PM	8.00PM	8.00PM	4.00PM
Chromointerference	Aotea Centre Wrap, Aotea Square	67		Opens WED 11 MAR																		Ends SUN 29 MAR
Honestly Speaking: The Word, the Body and the Internet	Auckland Art Gallery Toi o Tāmaki	64	Opens SAT 22 FEB																			Ends SUN 7 JUN
I Extend My Arms	Digital Stage, Aotea Square	66		Opens WED 11 MAR																		Ends SUN 29 MAR
Ōtairongo	Artspace Aotearoa	58	Opens FRI 6 MAR									Te Oro o Te Wihine Māori 7.00PM								Rongo's 7.00PM		Ends SAT 16 MAY
Queer Algorithms	Gus Fisher Gallery	65	Opens SAT 15 FEB																			Ends SAT 2 MAY
Safe as Houses	Vunilagi Vou	61	Opens TUE 3 MAR																			Ends SAT 4 APR
Speaking Surfaces	ST PAUL St Gallery	63	Opens FRI 21 FEB											Creative Wānanga 10.00AM – 5.00PM	Creative Wānanga 10.00AM – 5.00PM						Ends SAT 16 MAY	
Split Level View Finder	Te Uru Waitākere Contemporary Gallery	62	Opens SAT 7 MAR																			Ends SUN 31 MAY
Talks / The Curry House Kid	Spiegelent, Aotea Square / Academy Cinemas	56								Baby Mutants 5.30PM					The Curry House Kid + Dark Magic 2.00PM		Culture Vulture 5.30PM					
Transmission	Objectspace	60			Opens THU 12 MAR								Music Performance 7.00PM									Ends SUN 3 MAY



- 9 **Ellen Melville Centre**

2 Freyberg Place
- 10 **Gus Fisher Gallery**

74 Shortland Street
- 11 **Objectspace**

13 Rose Road, Grey Lynn
- 12 **Q Theatre (Rangatira & Loft)**

305 Queen Street
- 13 **Spiegelent (Aotea Square)**

291-297 Queen St
- 14 **ST PAUL St Gallery, AUT**

Level 1, WM Building, 40 Paul Street
- 15 **Auckland Domain (Upper Field)**

Park Road, Grafton

Accessible Venue. Some wheelchair seating available. If icon is not displayed, access may be restricted.

A hearing loop is available.

Enquire when booking to ensure you receive suitable seating if you need these facilities.

For more information on venues, inner city parking and public transport to and from Festival events, visit aaf.co.nz/planyourstay

CBD & CENTRAL AUCKLAND VENUES

- 1 **Academy Cinemas**

44 Lorne Street
- 2 **Aotea Centre (Kiri Te Kanawa Theatre & Waitākere Room)**

50 Mayoral Drive
- 3 **Aotea Square (Aotea Centre Wrap & Digital Stage)**

291-297 Queen St
- 4 **Artspace Aotearoa**

292 Karangahape Road (from March 2020)
- 5 **ASB Waterfront Theatre**

138 Halsey Street
- 6 **Auckland Art Gallery Toi o Tāmaki**

Corner Kitchener & Wellesley Streets
- 7 **Auckland Town Hall (Great Hall & Concert Chamber)**

301 Queen Street
- 8 **AVANI Auckland Metropolis Residences**

40 Kitchener Street



VENUES OUTSIDE THE CITY

- 1 **Artworks Community Theatre, Waiheke Island**

2 Korora Road, Oneroa, Waiheke Island
- 2 **Barnett Hall, Piha**

2 North Piha Road, Piha
- 3 **Bruce Mason Centre**

1 The Promenade, Takapuna Beach
- 4 **Helensville War Memorial Hall**

2 Porter Crescent, Helensville
- 5 **Hollywood Avondale**

20 St Georges Road, Avondale
- 6 **Māngere Arts Centre - Ngā Tohu o Uenuku**

Corner Bader Drive and Orly Avenue, Māngere
- 7 **Māngere War Memorial Hall**

23 Domain Road, Māngere Bridge
- 8 **Orewa Community Centre**

40-46 Orewa Square, Orewa
- 9 **Te Oro, Glen Innes**

98 Line Road, Glen Innes
- 10 **Te Uru Waitākere Contemporary Gallery**

420 Titirangi Road, Titirangi
- 11 **The Pumphouse Theatre, Takapuna**

2A Manurewa Ave, Takapuna
- 12 **Vunilagi Vou**

4/256 Great South Road, Ōtāhuhu
- 13 **Waiuku Memorial Town Hall**

Queen Street and Victoria Avenue, Waiuku
- 14 **Warkworth Town Hall**

2 Alnwick Street, Warkworth
- 15 **Zeal West, Henderson**

20 Alderman Drive, Henderson



Book Early and Save at Auckland Arts Festival

Simply book by **Monday 9 December** and save with our **Early Bird tickets**.*



Book with the Festival Shopping Cart and Save

Book all your tickets in one transaction at **aaf.co.nz** using the Festival Shopping Cart and **save on booking fees**.

Book Now at **AAF.CO.NZ**

Follow us

- facebook.com/Akifestival
- @Akifestival
- @Akifestival
- AucklandFestival

*See p76-77 for conditions. Early bird tickets are available for most shows until midnight Monday 9 December 2019, or until allocation sold out. Ticket limits may apply. Visit aaf.co.nz/earlybird for Early Bird shows.

AUCKLAND ARTS FESTIVAL

TE AHUREI TOI O TĀMAKI MAKAURAU

aaf.co.nz

Te Ahurei Toi o Tāmaki Makaurau / Auckland Arts Festival is a place for ambitious ideas by storytellers, provocateurs and creators.

The Festival reflects our contemporary, cosmopolitan city with its many communities. It challenges artists and audiences to be bold and take a risk. Through the work of artists of Aotearoa and across the world, we aim to unify, enlighten and inspire the people of Auckland / Tāmaki Makaurau and our many visitors.

A globally recognised celebration of art and culture taking place each March in New Zealand's largest city, AAF will be presented for the 12th time in 2020. The Festival has attracted nearly two million visitors to date.

Festival People

Patron

The Governor General,
Her Excellency
The Right Honourable
Dame Patsy Reddy,
GNZM, QSO

Board of Trustees

John Judge (Chair)
Angela Clatworthy
Rick Carlyon
Evan Davies
Sarah Judkins
Tarun Kanji
Graham Tipene
Fred Ward
Angela Watson

Chief Executive

David Inns

Artistic Director

Jonathan Bielski

Business & Finance Manager

Vanessa Zigliani

Accounts & Payroll Administrator

Mirena Tomas

Executive Assistant

Elizabeth Swinburn

Office Manager

Gill Saker

Pou Tikanga

Eynon Delamere

Head of Programming

Dolina Wehipeihana

Creative Associate

Tama Waipara

Senior Programme Manager

Steph Walker

Programme Manager – Toitū te Reo

Ngatapa Black

Programme Coordinator – Whānui

Noma Sio-Faiumu

Programme Coordinator – Creative Learning

Amy Turner

Programme Coordinator – Access & Inclusion

Alex Lodge

Artist & Logistics Manager

Megan Andrews

Programme Administrator

Michelle Wigg

Technical Manager

Nick Tomlin

Technical Administrator

Anna Bennington

Head of Staging

Andrew Gibson

Head of Lighting

Abby Clearwater

Head of Sound

Sandy Gunn

Head of AV

Simon Barker

Production Manager

Vicki Cooksley

Production Manager, Place des Anges

Pak Peacocke

Operations Manager, Place des Anges

Charlotte Crone

Marketing & Communications Director

Thierry Pannetier

Marketing & Communications Manager

Sally Woodfield

Brand & Content Creation Manager

Tim Wong

Festival Publicist

Tess Marshall

Communications & Digital Marketing Assistant

Jesse Carpenter

Marketing Assistant

Camila Araos Elevancini

Partnerships Executive

Vanessa Morgan

Ticketing Manager

Jillian Davey

Founding Friends

Adrian Burr
Graeme Edwards
Friedlander Foundation
Dame Jenny Gibbs
Sir Chris & Dayle, Lady Mace

Brochure Concept & Design **COLENSOBBDO**

Brochure Production

Tim Wong
Camila Araos Elevancini

Te Reo Māori Translator

Stephanie Huriana Fong –
Pae Tū Ltd

Contact

Ph +64 09 309 0101

Email info@aaf.co.nz

Level 5, Wellesley Centre
44-52 Wellesley Street West
PO Box 5419, Auckland 1141

FESTIVAL PATRONAGE & CORPORATE PARTNERSHIP

Your Support Makes It Happen

For 16 years, Auckland Arts Festival has been contributing to the cultural vibrancy of Auckland by bringing extraordinary world-class events to our city, sharing the joy of live performance, and creating rich and meaningful experiences for Aucklanders.

But we haven't been doing it alone. As a charitable trust, we are incredibly grateful for the philanthropic support of our **Festival patrons, sponsors, trusts and donors** to help us present this world-class event every year.

Donations, sponsorships and grants help us to deliver performances of scale and ambition by both local and international artists. They help us to take the Festival to all our communities through our **Access & Inclusion** and **Creative Learning** programmes. And they help us provide an important platform for new and established New Zealand artists through our **Creation of New Work** programme.

Arts participation improves the overall wellbeing of a society, promotes tolerance and diversity, and creates conversations within and between communities. Through your generous gifts, we can continue to build our legacy for the next generations.

Help us continue making Auckland Arts Festival a festival for everyone!

Contact us at info@aaf.co.nz or patrons@aaf.co.nz, or visit aaf.co.nz for more information.

2

2

TE AHUREI TOI Poutūterangi
11–29 2020
O TĀMAKI MAKAURAU

0

0